

# ALUMY CREEK BONUS T038 PVPV

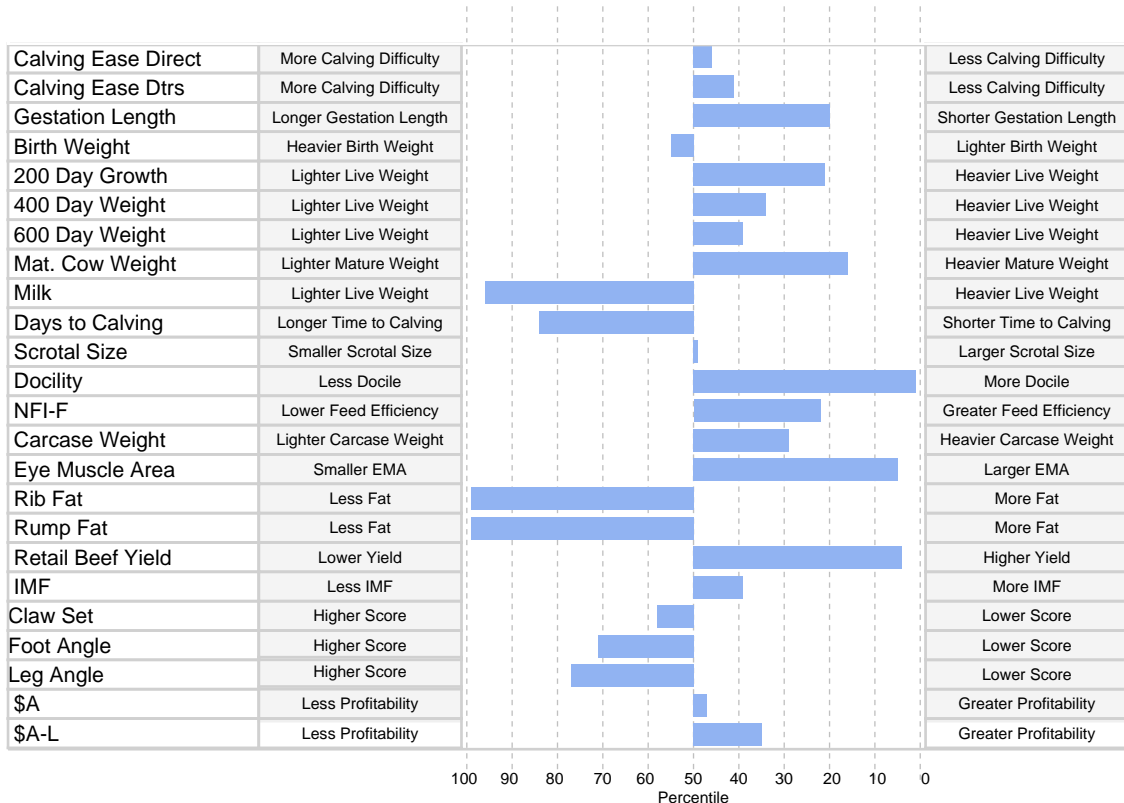


**Animal ID** NKE22T038  
**NLIS Visual No/RFID** NK512030XBTT0038 / -  
**Date of Birth** 17/07/2022  
**Inventory Season** n/a  
**Sex** Male  
**Register** Herd Book Register  
**Mating Type** AI  
**Colour** Black  
**Birth Number** Single  
**Status** Active  
**DNA Profile Stored** SNP  
**Parentage Verification** Parent verified  
**Genetic Conditions** AMFU,CAFU,DDFU,NHFU

USA16711095 SYDGEN GOOGOL#  
 USA17501893 SYDGEN EXCEED 3223<sup>PV</sup>  
 USA16904400 SYDGEN FOREVER LADY 1255#  
**Sire: USA19169335 SYDGEN BONUS 8084<sup>PV</sup>**  
 USA16295688 G A R PROPHET<sup>SV</sup>  
 USA18104837 SYDGEN BLACKCAP 5371#  
 USA17270735 H P C A 5050 212#  
 USA16430862 K C F BENNETT SOUTHSIDE<sup>PV</sup>  
 USA17849954 K C F BENNETT THEROCK A473<sup>PV</sup>  
 USA16430913 K C F MISS PROTEGE W148#  
**Dam: NKER016 ALUMY CREEK TANDIA R016<sup>SV</sup>**  
 USA18229488 BALDRIDGE COMPASS C041<sup>SV</sup>  
 NKEN049 ALUMY CREEK TANDIA N049#  
 NKEJ71 ALUMY CREEK TANDIA J71#

August 2024 TransTasman Angus Cattle Evaluation												
TACE <small>TransTasman Angus Cattle Evaluation</small>	Calving Ease				Growth					Fertility		Temp
	Calving Ease Dir	Calving Ease Dtrs	Gest. Length	Birth Wt	200 Day Growth	400 Day Weight	600 Day Weight	Mat. Cow Weight	Milk	Days to Calving	Scrotal Size	Docility
<b>EBV</b>	<b>+2.8</b>	<b>+3.9</b>	<b>-6.5</b>	<b>+4.2</b>	<b>+57</b>	<b>+97</b>	<b>+124</b>	<b>+127</b>	<b>+9</b>	<b>-3.0</b>	<b>+2.1</b>	<b>+46</b>
Acc	66%	55%	83%	82%	83%	81%	81%	78%	75%	40%	79%	77%
Perc	46	41	20	55	21	34	39	16	96	84	50	1
	Carcase						Feed Efficiency		Structural		Selection Index	
	Carcase Weight	EMA	Rib Fat	Rump Fat	RBV	IMF	NFI-F	Claw Set	Foot Angle	Leg Angle	\$A	\$A-L
<b>EBV</b>	<b>+75</b>	<b>+12.4</b>	<b>-4.0</b>	<b>-6.0</b>	<b>+1.7</b>	<b>+2.6</b>	<b>-0.05</b>	<b>+0.88</b>	<b>+1.06</b>	<b>+1.12</b>	<b>\$206</b>	<b>\$367</b>
Acc	70%	70%	69%	70%	62%	74%	60%	71%	71%	66%	-	-
Perc	29	5	99	99	4	39	22	58	71	77	47	35

Traits Observed: GL,BWT,200WT,400WT,600WT,SC,Genomics  
 Statistics: Number of Herds: 0 Prog Analysed: 0



© 2024 Angus Australia

**Important Notice**

The information contained in this animal listing has been compiled from databases owned by Angus Australia and has been designed, created and published by Angus Australia. The information is owned by Angus Australia and has been published for information purposes only. No section or individual item may be reproduced or used by any person or other legal entity for any commercial purpose whatsoever, without the prior express consent of Angus Australia.

# ALUMY CREEK ENTICE T043 SVSV

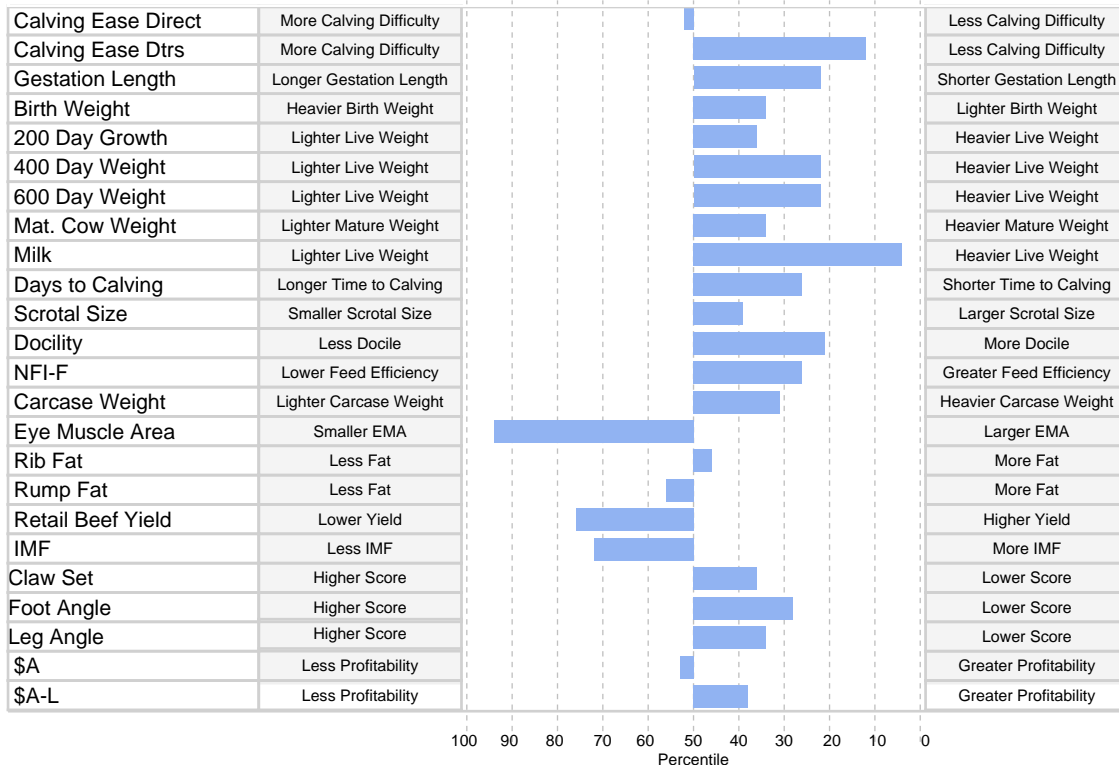


**Animal ID** NKE22T043  
**NLIS Visual No/RFID** NK512030XBTT0043 / -  
**Date of Birth** 17/07/2022  
**Inventory Season** n/a  
**Sex** Male  
**Register** Herd Book Register  
**Mating Type** AI  
**Colour** Black  
**Birth Number** Single  
**Status** Active  
**DNA Profile Stored** SNP  
**Parentage Verification** Sire verified  
**Genetic Conditions** AMFU,CAFU,DDFU,NHFU

USA17501893 SYDGEN EXCEED 3223<sup>PV</sup>  
 USA18170041 SYDGEN ENHANCE<sup>SV</sup>  
 USA17405676 SYDGEN RITA 2618<sup>#</sup>  
**Sire: USA18952921 MOGCK ENTICE<sup>SV</sup>**  
 USA17671300 MOGCK SURE SHOT 253<sup>#</sup>  
 USA18334720 MOGCK ERICA 2255<sup>#</sup>  
 USA17359834 MOGCK ERICA 2162<sup>#</sup>  
 USA17264774 MUSGRAVE AVIATOR<sup>SV</sup>  
 USA18194405 MUSGRAVE APACHE<sup>SV</sup>  
 USA17606917 MUSGRAVE CAROLINE 1304-189<sup>#</sup>  
**Dam: NKEP093 ALUMY CREEK TANDIA P093<sup>#</sup>**  
 USA17383988 POSS ELEMENT 215<sup>#</sup>  
 NKEM067 ALUMY CREEK TANDIA M067<sup>#</sup>  
 NKEK26 ALUMY CREEK TANDIA K26<sup>#</sup>

August 2024 TransTasman Angus Cattle Evaluation												
TACE <small>TransTasman Angus Cattle Evaluation</small>	Calving Ease				Growth					Fertility		Temp
	Calving Ease Dir	Calving Ease Dtrs	Gest. Length	Birth Wt	200 Day Growth	400 Day Weight	600 Day Weight	Mat. Cow Weight	Milk	Days to Calving	Scrotal Size	Docility
<b>EBV</b>	<b>+2.2</b>	<b>+7.0</b>	<b>-6.3</b>	<b>+3.3</b>	<b>+54</b>	<b>+102</b>	<b>+133</b>	<b>+112</b>	<b>+26</b>	<b>-5.7</b>	<b>+2.4</b>	<b>+28</b>
Acc	65%	54%	83%	82%	82%	81%	81%	78%	73%	39%	79%	76%
Perc	52	12	22	34	36	22	22	34	4	26	39	21
	Carcase						Feed Efficiency		Structural		Selection Index	
	Carcase Weight	EMA	Rib Fat	Rump Fat	RBV	IMF	NFI-F	Claw Set	Foot Angle	Leg Angle	\$A	\$A-L
<b>EBV</b>	<b>+74</b>	<b>+1.4</b>	<b>+0.1</b>	<b>-0.7</b>	<b>+0.0</b>	<b>+1.4</b>	<b>-0.01</b>	<b>+0.78</b>	<b>+0.88</b>	<b>+0.98</b>	<b>\$200</b>	<b>\$363</b>
Acc	69%	69%	68%	69%	61%	73%	58%	71%	71%	63%	-	-
Perc	31	94	46	56	76	72	26	36	28	34	53	38

Traits Observed: GL,BWT,200WT,400WT,600WT,SC,Genomics  
 Statistics: Number of Herds: 0 Prog Analysed: 0



**Important Notice**

© 2024 Angus Australia  
 The information contained in this animal listing has been compiled from databases owned by Angus Australia and has been designed, created and published by Angus Australia. The information is owned by Angus Australia and has been published for information purposes only. No section or individual item may be reproduced or used by any person or other legal entity for any commercial purpose whatsoever, without the prior express consent of Angus Australia.

# ALUMY CREEK TEXAS T118 SVSV

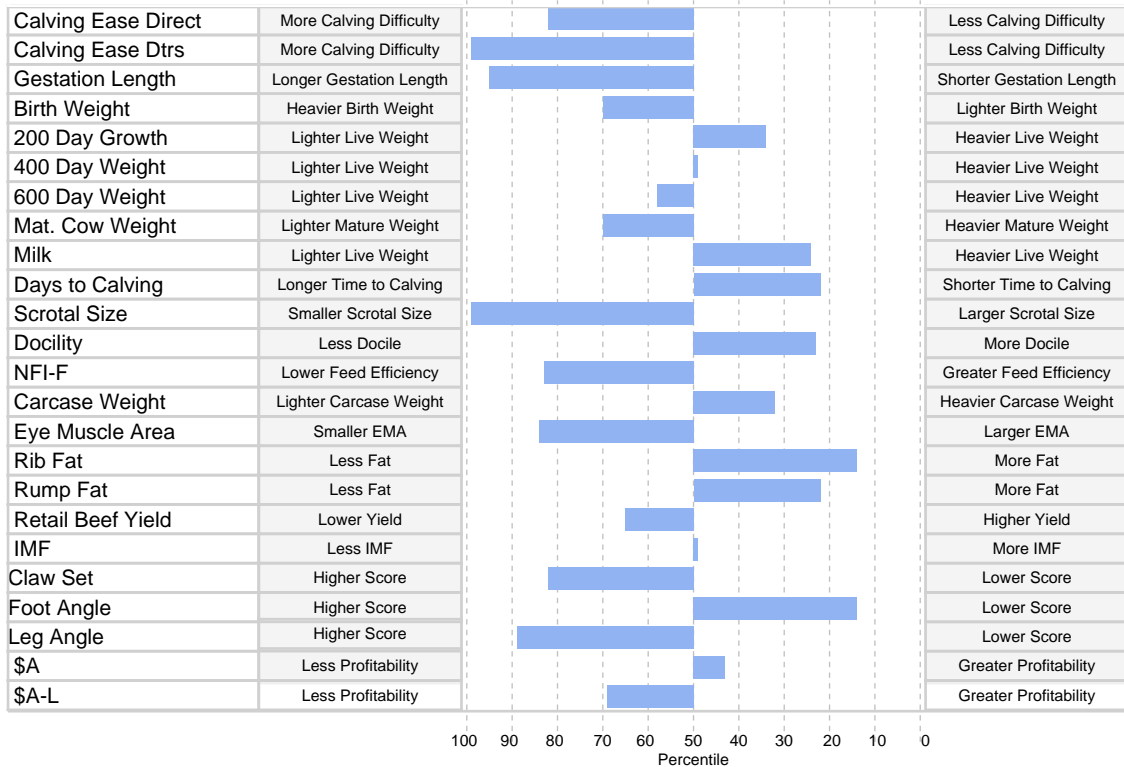


**Animal ID** NKE22T118  
**NLIS Visual No/Rfid** NK512030XBTT0118 / -  
**Date of Birth** 28/07/2022  
**Inventory Season** n/a  
**Sex** Male  
**Register** Herd Book Register  
**Mating Type** AI  
**Colour** Black  
**Birth Number** Single  
**Status** Active  
**DNA Profile Stored** SNP  
**Parentage Verification** Sire verified  
**Genetic Conditions** AMFU,CAFU,DDFU,NHFU

USA16295688 G A R PROPHET<sup>SV</sup>  
 QMUM13 CLUNES CROSSING DUSTY M13<sup>PV</sup>  
 QMUG1 CLUNES CROSSING GLORIOUS G1<sup>SV</sup>  
**Sire: BONQ007 BRIDGEWATER QUANTUM Q007<sup>PV</sup>**  
 VLYE313 LAWSONS NOVAK E313<sup>SV</sup>  
 HIOL28 AYRVALE LILYFIELD L28<sup>PV</sup>  
 HIOH19 AYRVALE HEIRLOOM H19<sup>PV</sup>  
 USA16368389 VISIONTOPLINE ROYAL  
 USA16992096 VISION UNANIMOUS 1418<sup>PV</sup>  
 USA15526060 VISION EDELLA 665<sup>#</sup>  
**Dam: NKEQ079 ALUMY CREEK DORIS Q079<sup>#</sup>**  
 USA15840414 TC ABERDEEN 759<sup>SV</sup>  
 NKEF24 ALUMY CREEK DORIS F24<sup>#</sup>  
 NKEA33 ALUMY CREEK DORIS A33<sup>#</sup>

August 2024 TransTasman Angus Cattle Evaluation												
TACE <small>TransTasman Angus Cattle Evaluation</small>	Calving Ease				Growth					Fertility		Temp
	Calving Ease Dir	Calving Ease Dtrs	Gest. Length	Birth Wt	200 Day Growth	400 Day Weight	600 Day Weight	Mat. Cow Weight	Milk	Days to Calving	Scrotal Size	Docility
<b>EBV</b>	<b>-2.1</b>	<b>-9.7</b>	<b>-0.4</b>	<b>+4.9</b>	<b>+54</b>	<b>+92</b>	<b>+115</b>	<b>+89</b>	<b>+20</b>	<b>-5.9</b>	<b>-0.6</b>	<b>+27</b>
Acc	64%	55%	83%	81%	82%	81%	81%	78%	73%	43%	78%	75%
Perc	82	99	95	70	34	49	58	70	24	22	99	23
	Carcase					Feed Efficiency			Structural		Selection Index	
	Carcase Weight	EMA	Rib Fat	Rump Fat	RBV	IMF	NFI-F	Claw Set	Foot Angle	Leg Angle	\$A	\$A-L
<b>EBV</b>	<b>+74</b>	<b>+3.2</b>	<b>+1.9</b>	<b>+1.4</b>	<b>+0.2</b>	<b>+2.2</b>	<b>+0.56</b>	<b>+1.02</b>	<b>+0.80</b>	<b>+1.18</b>	<b>\$209</b>	<b>\$325</b>
Acc	73%	72%	72%	73%	62%	76%	66%	65%	65%	60%	-	-
Perc	32	84	14	22	65	49	83	82	14	89	43	69

Traits Observed: BWT,400WT,600WT,SC,Genomics  
 Statistics: Number of Herds: 0 Prog Analysed: 0



© 2024 Angus Australia

**Important Notice**

The information contained in this animal listing has been compiled from databases owned by Angus Australia and has been designed, created and published by Angus Australia. The information is owned by Angus Australia and has been published for information purposes only. No section or individual item may be reproduced or used by any person or other legal entity for any commercial purpose whatsoever, without the prior express consent of Angus Australia.

# ALUMY CREEK REVERED T120 SVSV

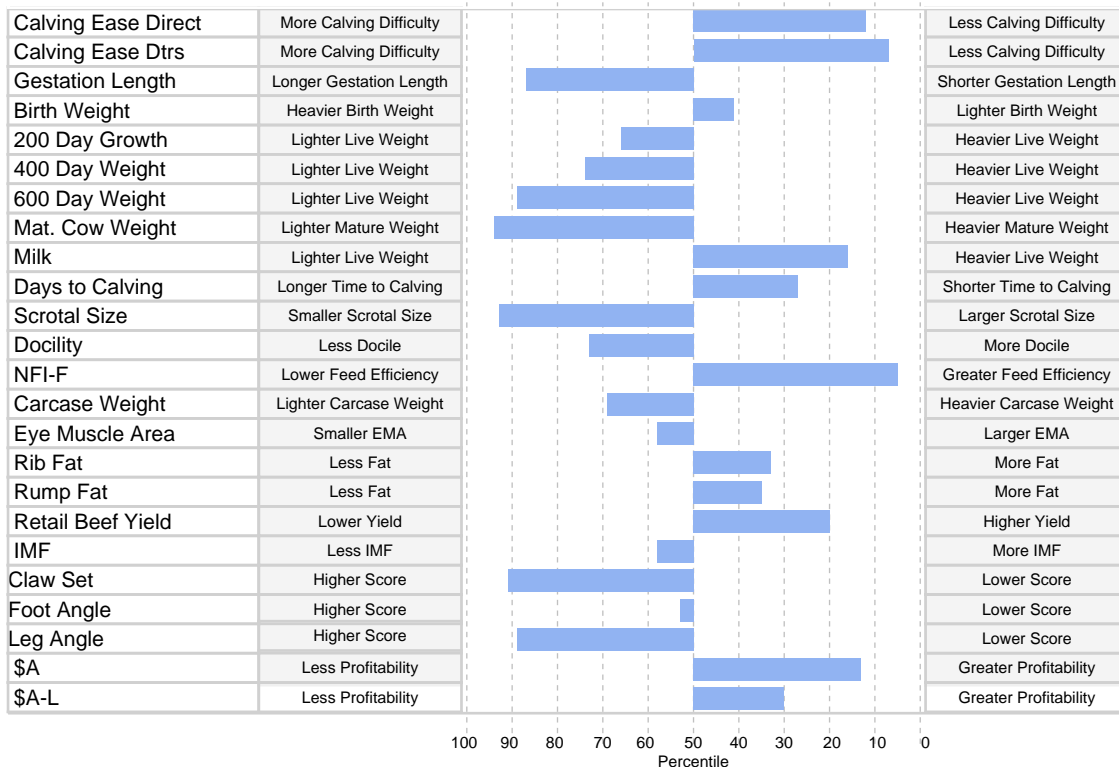


**Animal ID** NKE22T120  
**NLIS Visual No/Rfid** NK512030XBTT0120 / -  
**Date of Birth** 29/07/2022  
**Inventory Season** n/a  
**Sex** Male  
**Register** Herd Book Register  
**Mating Type** AI  
**Colour** Black  
**Birth Number** Single  
**Status** Active  
**DNA Profile Stored** SNP  
**Parentage Verification** Sire verified  
**Genetic Conditions** AMFU,CA3%,DDFU,NHFU

USA17280032 BASIN RAINMAKER 2704#  
 USA17913751 BASIN RAINMAKER 4404<sup>PV</sup>  
 USA16935098 BASIN JOY 1036#  
**Sire: USA19548516 LT REVERED<sup>SV</sup>**  
 USA18200213 S FOUNDATION 514<sup>PV</sup>  
 USA18953479 LT ASHLEY 7078#  
 USA16178983 LT ASHLEY 8263#  
 EFTD6 THE GRANGE WHEEL WRIGHT D6<sup>PV</sup>  
 QHEH215 CARABAR WHEEL WRIGHT H215<sup>PV</sup>  
 QHEB12 CARABAR BLACKCAP MARY B12<sup>PV</sup>  
**Dam: NKEM103 ALUMY CREEK TRILOGY M103#**  
 USA878 BON VIEW NEW DESIGN 878#  
 NKEZ37 ALUMY CREEK TRILOGY Z37<sup>SV</sup>  
 NKEV41 ALUMY CREEK TRILOGY V41#

August 2024 TransTasman Angus Cattle Evaluation												
TACE <small>TransTasman Angus Cattle Evaluation</small>	Calving Ease				Growth					Fertility		Temp
	Calving Ease Dir	Calving Ease Dtrs	Gest. Length	Birth Wt	200 Day Growth	400 Day Weight	600 Day Weight	Mat. Cow Weight	Milk	Days to Calving	Scrotal Size	Docility
<b>EBV</b>	<b>+6.9</b>	<b>+7.8</b>	<b>-1.7</b>	<b>+3.6</b>	<b>+47</b>	<b>+84</b>	<b>+97</b>	<b>+62</b>	<b>+22</b>	<b>-5.6</b>	<b>+0.6</b>	<b>+15</b>
Acc	62%	51%	83%	81%	82%	80%	81%	77%	72%	38%	78%	72%
Perc	12	7	87	41	66	74	89	94	16	27	93	73
	Carcase					Feed Efficiency		Structural		Selection Index		
	Carcase Weight	EMA	Rib Fat	Rump Fat	RBV	IMF	NFI-F	Claw Set	Foot Angle	Leg Angle	\$A	\$A-L
<b>EBV</b>	<b>+61</b>	<b>+5.7</b>	<b>+0.7</b>	<b>+0.5</b>	<b>+1.0</b>	<b>+1.9</b>	<b>-0.41</b>	<b>+1.10</b>	<b>+0.98</b>	<b>+1.18</b>	<b>\$240</b>	<b>\$374</b>
Acc	69%	68%	68%	68%	59%	73%	58%	68%	68%	59%	-	-
Perc	69	58	33	35	20	58	5	91	53	89	13	30

Traits Observed: GL,400WT,600WT,SC,Genomics  
 Statistics: Number of Herds: 0 Prog Analysed: 0



© 2024 Angus Australia

**Important Notice**

The information contained in this animal listing has been compiled from databases owned by Angus Australia and has been designed, created and published by Angus Australia. The information is owned by Angus Australia and has been published for information purposes only. No section or individual item may be reproduced or used by any person or other legal entity for any commercial purpose whatsoever, without the prior express consent of Angus Australia.

# ALUMY CREEK REVERED T121 SVSV

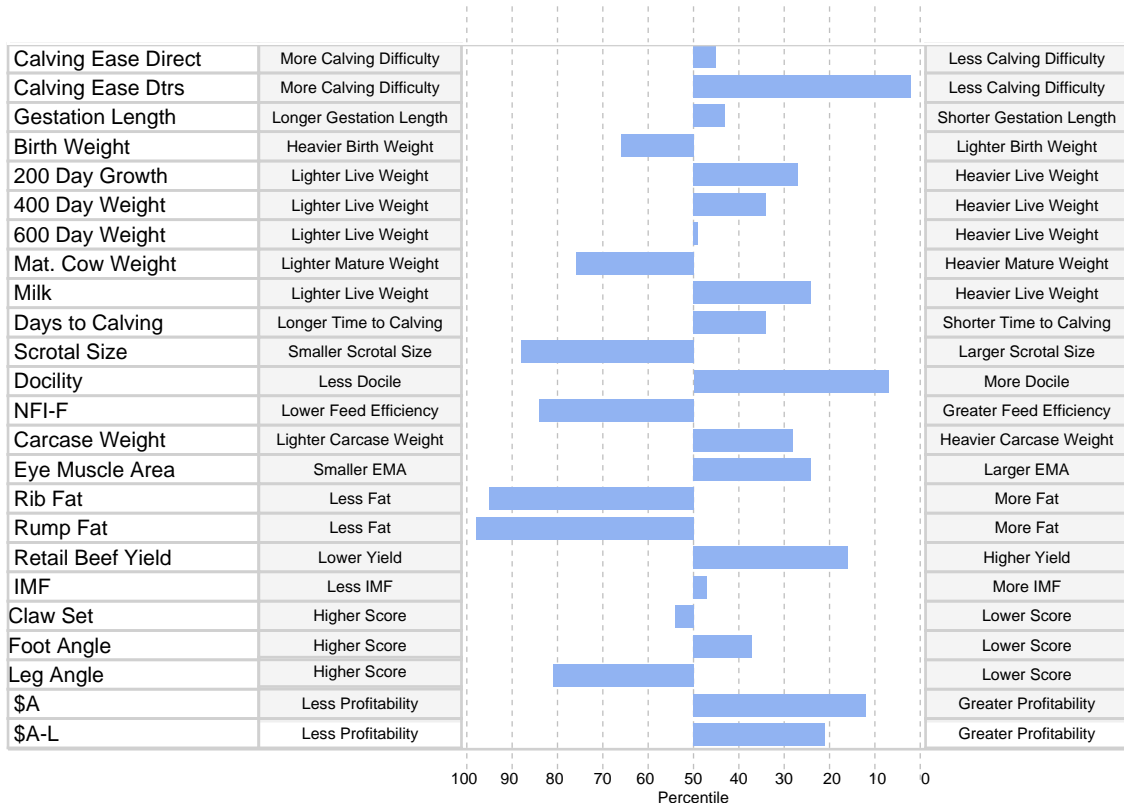


**Animal ID** NKE22T121  
**NLIS Visual No/RFID** NK512030XBTT0121 / -  
**Date of Birth** 29/07/2022  
**Inventory Season** n/a  
**Sex** Male  
**Register** Herd Book Register  
**Mating Type** AI  
**Colour** Black  
**Birth Number** Single  
**Status** Active  
**DNA Profile Stored** SNP  
**Parentage Verification** Sire verified  
**Genetic Conditions** AMFU,CAFU,DDFU,NHFU

USA17280032 BASIN RAINMAKER 2704#  
 USA17913751 BASIN RAINMAKER 4404<sup>PV</sup>  
 USA16935098 BASIN JOY 1036#  
**Sire: USA19548516 LT REVERED<sup>SV</sup>**  
 USA18200213 S FOUNDATION 514<sup>PV</sup>  
 USA18953479 LT ASHLEY 7078#  
 USA16178983 LT ASHLEY 8263#  
 NGMY145 BOOROOMOOKA UNDERTAKEN Y145<sup>PV</sup>  
 NORE11 RENNYLEA EDMUND E11<sup>PV</sup>  
 VLYY5 LAWSONS HENRY VIII Y5<sup>SV</sup>  
**Dam: NKEL005 ALUMY CREEK TRILOGY L005#**  
 USA15543702 CONNEALY IMPRESSION#  
 NKEJ66 ALUMY CREEK TRILOGY J66#  
 NKEC14 ALUMY CREEK TRILOGY C14#

August 2024 TransTasman Angus Cattle Evaluation												
TACE <small>TransTasman Angus Cattle Evaluation</small>	Calving Ease				Growth					Fertility		Temp
	Calving Ease Dir	Calving Ease Dtrs	Gest. Length	Birth Wt	200 Day Growth	400 Day Weight	600 Day Weight	Mat. Cow Weight	Milk	Days to Calving	Scrotal Size	Docility
<b>EBV</b>	<b>+2.9</b>	<b>+9.8</b>	<b>-4.8</b>	<b>+4.7</b>	<b>+56</b>	<b>+97</b>	<b>+119</b>	<b>+85</b>	<b>+20</b>	<b>-5.3</b>	<b>+0.9</b>	<b>+35</b>
Acc	64%	54%	83%	82%	82%	81%	81%	77%	73%	42%	78%	74%
Perc	45	2	43	66	27	34	49	76	24	34	88	7
	Carcase					Feed Efficiency			Structural		Selection Index	
	Carcase Weight	EMA	Rib Fat	Rump Fat	RBV	IMF	NFI-F	Claw Set	Foot Angle	Leg Angle	\$A	\$A-L
<b>EBV</b>	<b>+75</b>	<b>+8.7</b>	<b>-2.9</b>	<b>-4.9</b>	<b>+1.1</b>	<b>+2.3</b>	<b>+0.58</b>	<b>+0.86</b>	<b>+0.92</b>	<b>+1.14</b>	<b>\$243</b>	<b>\$387</b>
Acc	70%	69%	69%	70%	61%	74%	61%	69%	69%	60%	-	-
Perc	28	24	95	98	16	47	84	54	37	81	12	21

Traits Observed: GL,400WT,600WT,SC,Genomics  
 Statistics: Number of Herds: 0 Prog Analysed: 0



© 2024 Angus Australia

**Important Notice**

The information contained in this animal listing has been compiled from databases owned by Angus Australia and has been designed, created and published by Angus Australia. The information is owned by Angus Australia and has been published for information purposes only. No section or individual item may be reproduced or used by any person or other legal entity for any commercial purpose whatsoever, without the prior express consent of Angus Australia.

# ALUMY CREEK TRAIL BLAZER T124 SVSV

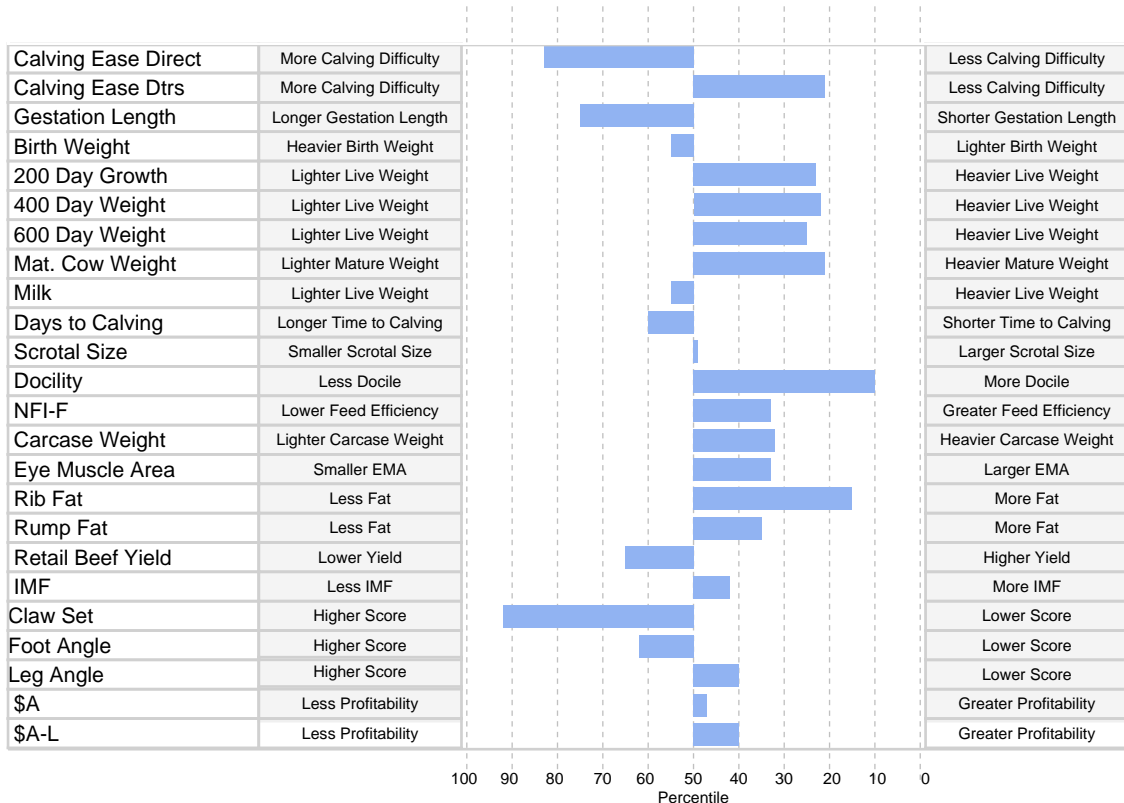


**Animal ID** NKE22T124  
**NLIS Visual No/RFID** NK512030XBTT0124 / -  
**Date of Birth** 29/07/2022  
**Inventory Season** n/a  
**Sex** Male  
**Register** Herd Book Register  
**Mating Type** AI  
**Colour** Black  
**Birth Number** Single  
**Status** Active  
**DNA Profile Stored** SNP  
**Parentage Verification** Sire verified  
**Genetic Conditions** AMFU,CA4%,DDFU,NHFU

USA15719841 A A R TEN X 7008 S A<sup>SV</sup>  
 USA17262835 V A R DISCOVERY 2240<sup>PV</sup>  
 USA16659293 DEER VALLEY RITA 0308<sup>#</sup>  
**Sire: USA18996007 FERGUSON TRAILBLAZER 239E<sup>SV</sup>**  
 USA16665803 LD EMBLAZON 999<sup>PV</sup>  
 USA17717153 MOLITOR999 BARBELLA 940-3012<sup>#</sup>  
 USA16511994 MOLITOR FA BARBELLA 389-940<sup>#</sup>  
 USA14963730 SITZ UPWARD 307R<sup>SV</sup>  
 USA16541214 EXAR UPSHOT 0562B<sup>#</sup>  
 USA15932534 EXAR BARBARA T020<sup>#</sup>  
**Dam: NKEK43 ALUMY CREEK TANDIA K43<sup>#</sup>**  
 USA13346328 KMK ALLIANCE 6595 I87<sup>#</sup>  
 NKED10 ALUMY CREEK TANDIA D10<sup>#</sup>  
 NKEW02 ALUMY CREEK KM TANDIA W02<sup>#</sup>

August 2024 TransTasman Angus Cattle Evaluation												
TACE	Calving Ease				Growth					Fertility		Temp
	Calving Ease Dir	Calving Ease Dtrs	Gest. Length	Birth Wt	200 Day Growth	400 Day Weight	600 Day Weight	Mat. Cow Weight	Milk	Days to Calving	Scrotal Size	Docility
<b>EBV</b>	<b>-2.4</b>	<b>+5.8</b>	<b>-2.8</b>	<b>+4.2</b>	<b>+57</b>	<b>+102</b>	<b>+131</b>	<b>+122</b>	<b>+16</b>	<b>-4.2</b>	<b>+2.1</b>	<b>+34</b>
Acc	68%	58%	84%	83%	84%	82%	83%	79%	76%	45%	81%	77%
Perc	83	21	75	55	23	22	25	21	55	60	50	10
	Carcase					Feed Efficiency		Structural		Selection Index		
	Carcase Weight	EMA	Rib Fat	Rump Fat	RBV	IMF	NFI-F	Claw Set	Foot Angle	Leg Angle	\$A	\$A-L
<b>EBV</b>	<b>+74</b>	<b>+7.8</b>	<b>+1.8</b>	<b>+0.5</b>	<b>+0.2</b>	<b>+2.5</b>	<b>+0.06</b>	<b>+1.12</b>	<b>+1.02</b>	<b>+1.00</b>	<b>\$206</b>	<b>\$361</b>
Acc	72%	72%	71%	72%	64%	76%	63%	66%	66%	56%	-	-
Perc	32	33	15	35	65	42	33	92	62	40	47	40

Traits Observed: GL,200WT,400WT,600WT,SC,Genomics  
 Statistics: Number of Herds: 0 Prog Analysed: 0



© 2024 Angus Australia

**Important Notice**

The information contained in this animal listing has been compiled from databases owned by Angus Australia and has been designed, created and published by Angus Australia. The information is owned by Angus Australia and has been published for information purposes only. No section or individual item may be reproduced or used by any person or other legal entity for any commercial purpose whatsoever, without the prior express consent of Angus Australia.

# ALUMY CREEK MONUMENTAL T125 SVSV

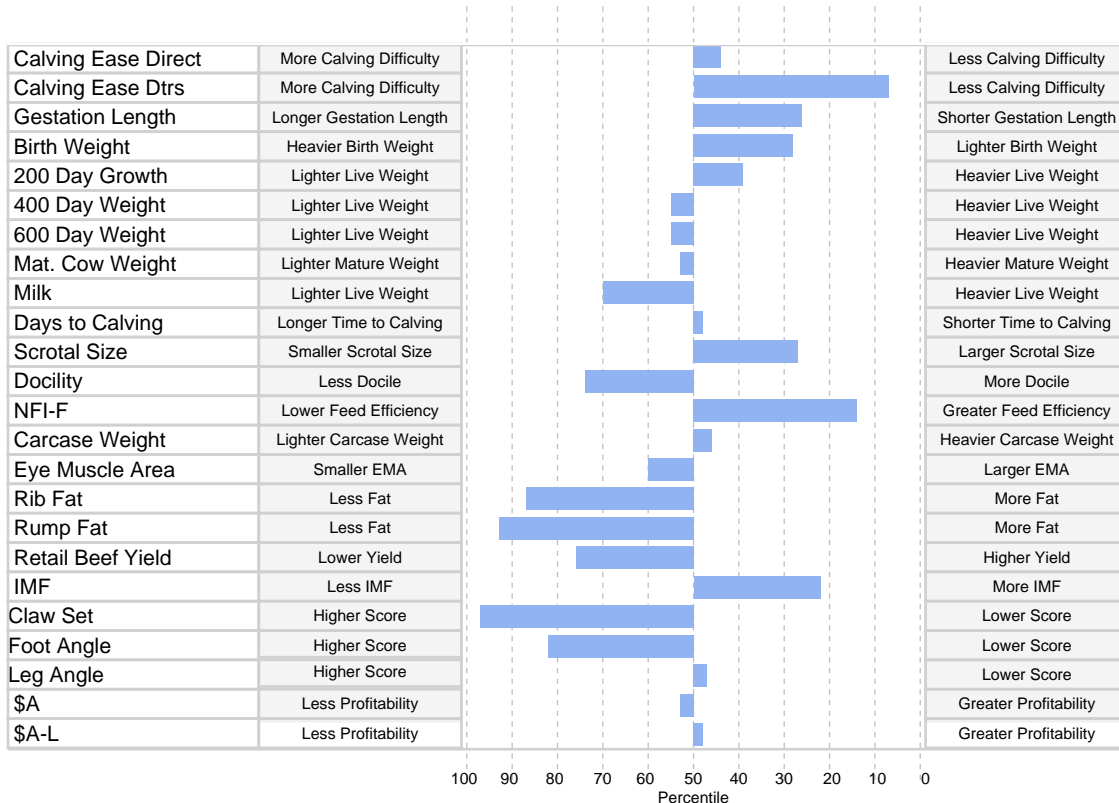


**Animal ID** NKE22T125  
**NLIS Visual No/RFID** NK512030XBTT0125 / -  
**Date of Birth** 29/07/2022  
**Inventory Season** n/a  
**Sex** Male  
**Register** Herd Book Register  
**Mating Type** AI  
**Colour** Black  
**Birth Number** Single  
**Status** Active  
**DNA Profile Stored** SNP  
**Parentage Verification** Sire verified  
**Genetic Conditions** AMFU,CA3%,DDFU,NHFU

USA17310103 VARILEK PRODUCT 2010 04#  
 USA17950219 3F EPIC 4631#  
 USA17056212 ZEBO QUEEN 1072#  
**Sire: USA18379347 EXAR MONUMENTAL 6056B<sup>PV</sup>**  
 USA15719841 A A R TEN X 7008 S A<sup>SV</sup>  
 USA17799315 FWY 7008 OF C085 4029#  
 USA17340168 FWY RITA C085#  
 USA15028961 BASIN EXPEDITION R156#  
 USA16047404 BASIN EXCITEMENT<sup>PV</sup>  
 USA15405297 BASIN LADY S532 AK#  
**Dam: NKEJ02 ALUMY CREEK NANCY J02#**  
 USA15543702 CONNEALY IMPRESSION#  
 NKEG29 ALUMY CREEK NANCY G29#  
 NKEE37 ALUMY CREEK NANCY E37#

August 2024 TransTasman Angus Cattle Evaluation												
TACE	Calving Ease				Growth					Fertility		Temp
	Calving Ease Dir	Calving Ease Dtrs	Gest. Length	Birth Wt	200 Day Growth	400 Day Weight	600 Day Weight	Mat. Cow Weight	Milk	Days to Calving	Scrotal Size	Docility
<b>EBV</b>	<b>+3.1</b>	<b>+8.0</b>	<b>-6.0</b>	<b>+3.0</b>	<b>+53</b>	<b>+90</b>	<b>+117</b>	<b>+100</b>	<b>+14</b>	<b>-4.7</b>	<b>+2.8</b>	<b>+14</b>
Acc	68%	57%	84%	82%	83%	82%	82%	79%	76%	43%	80%	76%
Perc	44	7	26	28	39	55	55	53	70	48	27	74
	Carcase					Feed Efficiency		Structural			Selection Index	
	Carcase Weight	EMA	Rib Fat	Rump Fat	RBV	IMF	NFI-F	Claw Set	Foot Angle	Leg Angle	\$A	\$A-L
<b>EBV</b>	<b>+69</b>	<b>+5.5</b>	<b>-1.9</b>	<b>-3.7</b>	<b>+0.0</b>	<b>+3.4</b>	<b>-0.17</b>	<b>+1.20</b>	<b>+1.12</b>	<b>+1.02</b>	<b>\$200</b>	<b>\$351</b>
Acc	71%	71%	71%	71%	64%	75%	61%	71%	71%	63%	-	-
Perc	46	60	87	93	76	22	14	97	82	47	53	48

Traits Observed: GL,200WT,400WT,600WT,SC,Genomics  
 Statistics: Number of Herds: 0 Prog Analysed: 0



**Important Notice**

© 2024 Angus Australia  
 The information contained in this animal listing has been compiled from databases owned by Angus Australia and has been designed, created and published by Angus Australia. The information is owned by Angus Australia and has been published for information purposes only. No section or individual item may be reproduced or used by any person or other legal entity for any commercial purpose whatsoever, without the prior express consent of Angus Australia.

# ALUMY CREEK ENTICE T130 SVSV

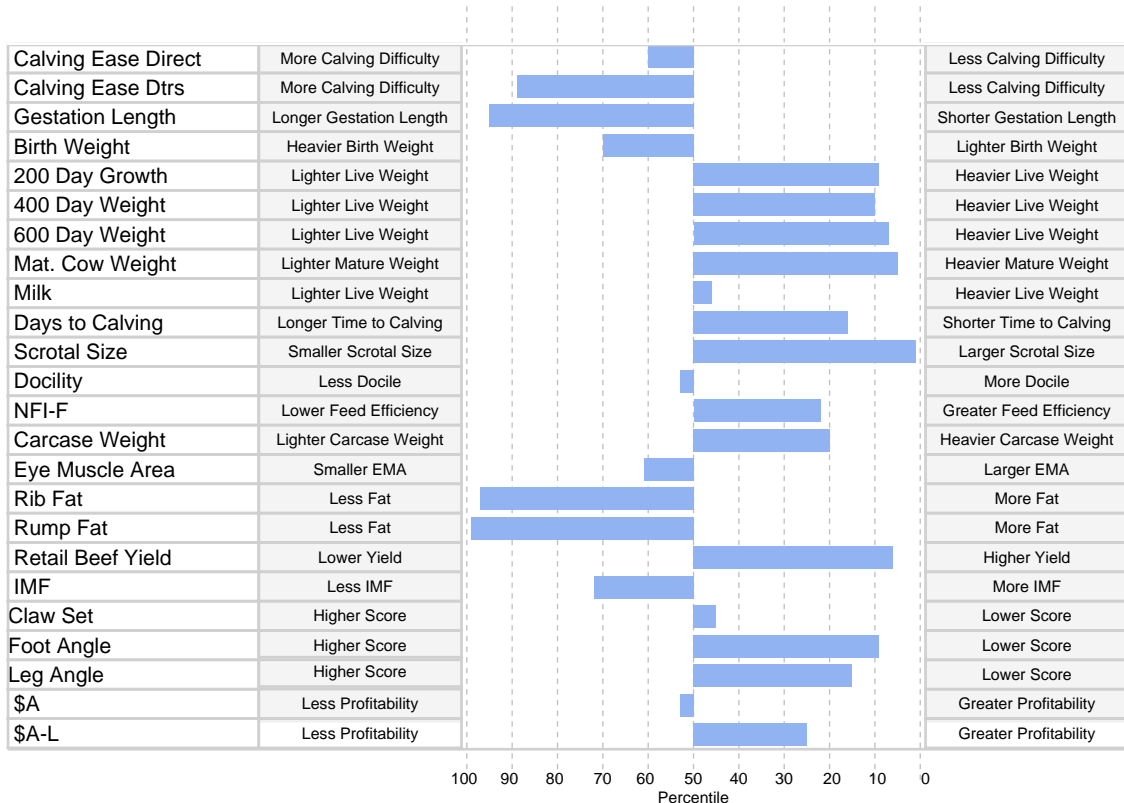


**Animal ID** NKE22T130  
**NLIS Visual No/RFID** NK512030XBTT0130 / -  
**Date of Birth** 29/07/2022  
**Inventory Season** n/a  
**Sex** Male  
**Register** Herd Book Register  
**Mating Type** AI  
**Colour** Black  
**Birth Number** Single  
**Status** Active  
**DNA Profile Stored** SNP  
**Parentage Verification** Sire verified  
**Genetic Conditions** AMFU,CAFU,DDFU,NHFU

USA17501893 SYDGEN EXCEED 3223<sup>PV</sup>  
 USA18170041 SYDGEN ENHANCE<sup>SV</sup>  
 USA17405676 SYDGEN RITA 2618<sup>#</sup>  
**Sire: USA18952921 MOGCK ENTICE<sup>SV</sup>**  
 USA17671300 MOGCK SURE SHOT 253<sup>#</sup>  
 USA18334720 MOGCK ERICA 2255<sup>#</sup>  
 USA17359834 MOGCK ERICA 2162<sup>#</sup>  
 USA14528330 CONNEALY REFLECTION<sup>#</sup>  
 USA15543702 CONNEALY IMPRESSION<sup>#</sup>  
 USA14528835 PEARL PAMMY OF CONANGA 194<sup>#</sup>  
**Dam: NKEH37 ALUMY CREEK DORIS H37<sup>#</sup>**  
 NGMT30 BOOROOMOOKA THEO T030<sup>SV</sup>  
 NKEY33 ALUMY CREEK DORIS Y33<sup>#</sup>  
 NKEW18 ALUMY CREEK DORIS W18<sup>#</sup>

August 2024 TransTasman Angus Cattle Evaluation												
TACE	Calving Ease				Growth					Fertility		Temp
	Calving Ease Dir	Calving Ease Dtrs	Gest. Length	Birth Wt	200 Day Growth	400 Day Weight	600 Day Weight	Mat. Cow Weight	Milk	Days to Calving	Scrotal Size	Docility
<b>EBV</b>	<b>+1.3</b>	<b>-2.0</b>	<b>-0.4</b>	<b>+4.9</b>	<b>+62</b>	<b>+109</b>	<b>+147</b>	<b>+147</b>	<b>+17</b>	<b>-6.3</b>	<b>+5.2</b>	<b>+20</b>
Acc	66%	56%	84%	82%	83%	82%	82%	78%	75%	42%	80%	76%
Perc	60	89	95	70	9	10	7	5	46	16	1	53
	Carcase					Feed Efficiency		Structural		Selection Index		
	Carcase Weight	EMA	Rib Fat	Rump Fat	RBV	IMF	NFI-F	Claw Set	Foot Angle	Leg Angle	\$A	\$A-L
<b>EBV</b>	<b>+79</b>	<b>+5.4</b>	<b>-3.4</b>	<b>-7.3</b>	<b>+1.5</b>	<b>+1.4</b>	<b>-0.05</b>	<b>+0.82</b>	<b>+0.76</b>	<b>+0.90</b>	<b>\$201</b>	<b>\$381</b>
Acc	71%	70%	70%	70%	62%	74%	60%	71%	71%	63%	-	-
Perc	20	61	97	99	6	72	22	45	9	15	53	25

Traits Observed: GL,200WT,400WT,600WT,SC,Genomics  
 Statistics: Number of Herds: 0 Prog Analysed: 0



© 2024 Angus Australia

**Important Notice**

The information contained in this animal listing has been compiled from databases owned by Angus Australia and has been designed, created and published by Angus Australia. The information is owned by Angus Australia and has been published for information purposes only. No section or individual item may be reproduced or used by any person or other legal entity for any commercial purpose whatsoever, without the prior express consent of Angus Australia.



# ALUMY CREEK BONUS T136 <sup>PVPV</sup>

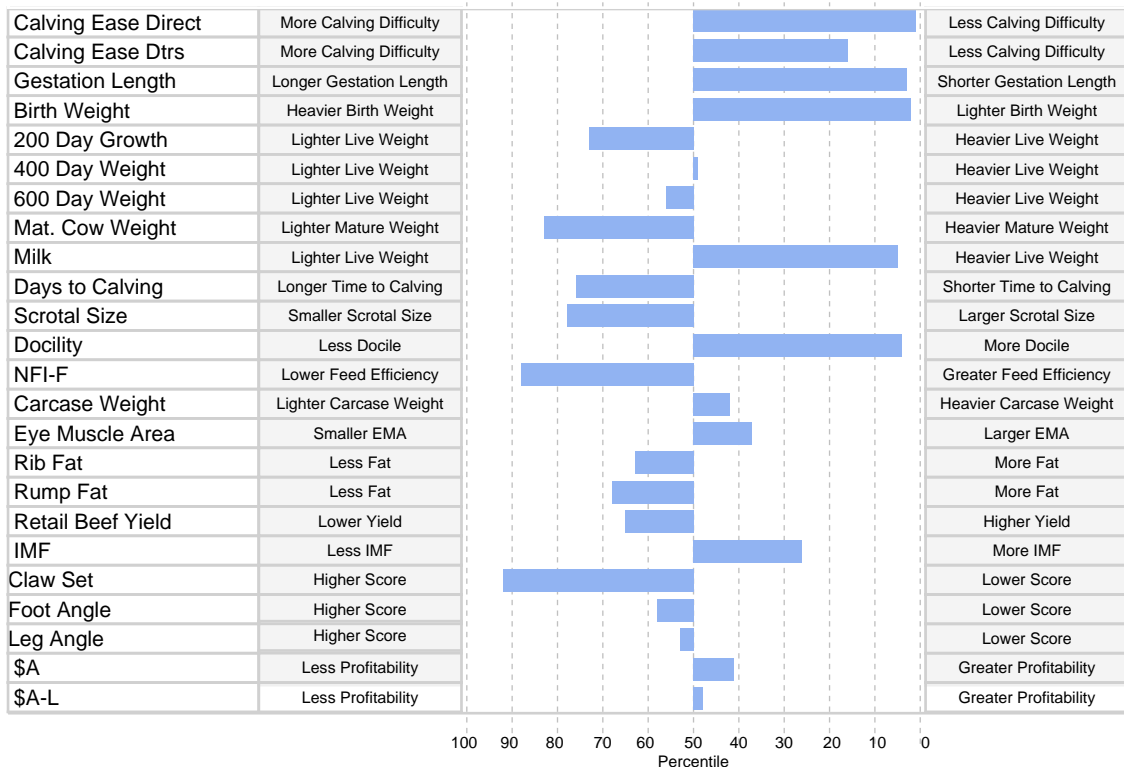


**Animal ID** NKE22T136  
**NLIS Visual No/RFID** NK512030XBTT0136 / -  
**Date of Birth** 01/08/2022  
**Inventory Season** n/a  
**Sex** Male  
**Register** Herd Book Register  
**Mating Type** AI  
**Colour** Black  
**Birth Number** Single  
**Status** Active  
**DNA Profile Stored** SNP  
**Parentage Verification** Parent verified  
**Genetic Conditions** AMFU,CAFU,DDFU,NHFU

USA16711095 SYDGEN GOOGOL#  
 USA17501893 SYDGEN EXCEED 3223<sup>PV</sup>  
 USA16904400 SYDGEN FOREVER LADY 1255#  
**Sire: USA19169335 SYDGEN BONUS 8084<sup>PV</sup>**  
 USA16295688 G A R PROPHET<sup>SV</sup>  
 USA18104837 SYDGEN BLACKCAP 5371#  
 USA17270735 H P C A 5050 212#  
 USA16430862 K C F BENNETT SOUTHSIDE<sup>PV</sup>  
 USA17849954 K C F BENNETT THEROCK A473<sup>PV</sup>  
 USA16430913 K C F MISS PROTEGE W148#  
**Dam: NKER003 ALUMY CREEK TRILOGY R003<sup>SV</sup>**  
 USA18229488 BALDRIDGE COMPASS C041<sup>SV</sup>  
 NKEN070 ALUMY CREEK TRILOGY N070#  
 NKEH68 ALUMY CREEK TRILOGY H68#

August 2024 TransTasman Angus Cattle Evaluation												
TACE	Calving Ease				Growth					Fertility		Temp
	Calving Ease Dir	Calving Ease Dtrs	Gest. Length	Birth Wt	200 Day Growth	400 Day Weight	600 Day Weight	Mat. Cow Weight	Milk	Days to Calving	Scrotal Size	Docility
<b>EBV</b>	<b>+10.4</b>	<b>+6.4</b>	<b>-9.4</b>	<b>-0.3</b>	<b>+46</b>	<b>+92</b>	<b>+116</b>	<b>+78</b>	<b>+26</b>	<b>-3.5</b>	<b>+1.3</b>	<b>+38</b>
Acc	68%	57%	84%	83%	84%	82%	83%	79%	76%	42%	81%	78%
Perc	1	16	3	2	73	49	56	83	5	76	78	4
TACE	Carcase						Feed Efficiency		Structural		Selection Index	
	Carcase Weight	EMA	Rib Fat	Rump Fat	RBV	IMF	NFI-F	Claw Set	Foot Angle	Leg Angle	\$A	\$A-L
<b>EBV</b>	<b>+70</b>	<b>+7.4</b>	<b>-0.6</b>	<b>-1.4</b>	<b>+0.2</b>	<b>+3.2</b>	<b>+0.64</b>	<b>+1.12</b>	<b>+1.00</b>	<b>+1.04</b>	<b>\$211</b>	<b>\$351</b>
Acc	72%	72%	71%	72%	63%	75%	62%	68%	68%	63%	-	-
Perc	42	37	63	68	65	26	88	92	58	53	41	48

Traits Observed: GL,BWT,200WT,400WT,600WT,SC,Genomics  
 Statistics: Number of Herds: 0 Prog Analysed: 0



© 2024 Angus Australia

**Important Notice**

The information contained in this animal listing has been compiled from databases owned by Angus Australia and has been designed, created and published by Angus Australia. The information is owned by Angus Australia and has been published for information purposes only. No section or individual item may be reproduced or used by any person or other legal entity for any commercial purpose whatsoever, without the prior express consent of Angus Australia.

# ALUMY CREEK BONUS T140 <sup>PVPV</sup>

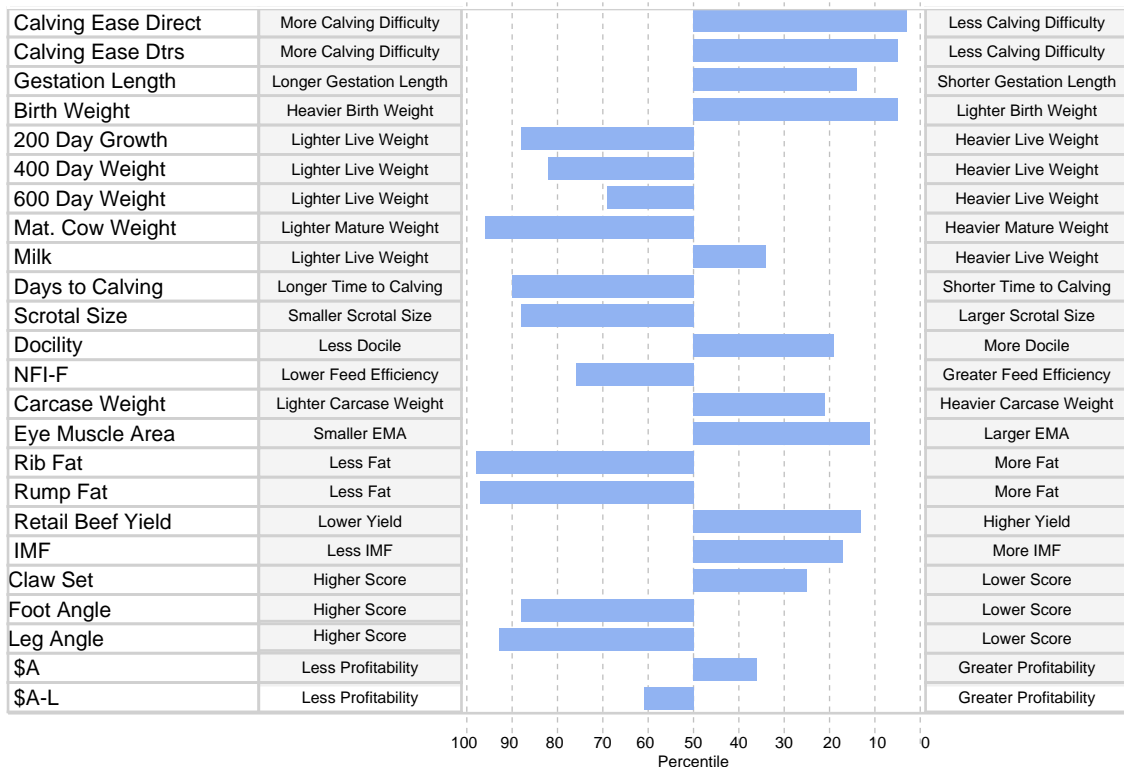


**Animal ID** NKE22T140  
**NLIS Visual No/RFID** NK512030XBTT0140 / -  
**Date of Birth** 02/08/2022  
**Inventory Season** n/a  
**Sex** Male  
**Register** Herd Book Register  
**Mating Type** AI  
**Colour** Black  
**Birth Number** Single  
**Status** Active  
**DNA Profile Stored** SNP  
**Parentage Verification** Parent verified  
**Genetic Conditions** AMFU,CAFU,DDFU,NHFU

USA16711095 SYDGEN GOOGOL#  
 USA17501893 SYDGEN EXCEED 3223<sup>PV</sup>  
 USA16904400 SYDGEN FOREVER LADY 1255#  
**Sire: USA19169335 SYDGEN BONUS 8084<sup>PV</sup>**  
 USA16295688 G A R PROPHET<sup>SV</sup>  
 USA18104837 SYDGEN BLACKCAP 5371#  
 USA17270735 H P C A 5050 212#  
 USA17950219 3F EPIC 4631#  
 USA18379347 EXAR MONUMENTAL 6056B<sup>PV</sup>  
 USA17799315 FWY 7008 OF C085 4029#  
**Dam: NKER028 ALUMY CREEK TRILOGY R028<sup>SV</sup>**  
 NORE11 RENNYLEA EDMUND E11<sup>PV</sup>  
 NKELO05 ALUMY CREEK TRILOGY L005#  
 NKEJ66 ALUMY CREEK TRILOGY J66#

August 2024 TransTasman Angus Cattle Evaluation												
TACE <small>TransTasman Angus Cattle Evaluation</small>	Calving Ease				Growth					Fertility		Temp
	Calving Ease Dir	Calving Ease Dtrs	Gest. Length	Birth Wt	200 Day Growth	400 Day Weight	600 Day Weight	Mat. Cow Weight	Milk	Days to Calving	Scrotal Size	Docility
<b>EBV</b>	<b>+9.0</b>	<b>+8.3</b>	<b>-7.1</b>	<b>+1.0</b>	<b>+41</b>	<b>+80</b>	<b>+110</b>	<b>+59</b>	<b>+19</b>	<b>-2.5</b>	<b>+0.9</b>	<b>+29</b>
Acc	67%	56%	83%	82%	83%	82%	82%	79%	76%	41%	80%	78%
Perc	3	5	14	5	88	82	69	96	34	90	88	19
	Carcase					Feed Efficiency			Structural		Selection Index	
	Carcase Weight	EMA	Rib Fat	Rump Fat	RBV	IMF	NFI-F	Claw Set	Foot Angle	Leg Angle	\$A	\$A-L
<b>EBV</b>	<b>+78</b>	<b>+10.6</b>	<b>-3.7</b>	<b>-4.8</b>	<b>+1.2</b>	<b>+3.7</b>	<b>+0.47</b>	<b>+0.72</b>	<b>+1.16</b>	<b>+1.22</b>	<b>\$215</b>	<b>\$336</b>
Acc	71%	71%	70%	71%	62%	74%	61%	70%	70%	66%	-	-
Perc	21	11	98	97	13	17	76	25	88	93	36	61

Traits Observed: GL,BWT,200WT,600WT,SC,Genomics  
 Statistics: Number of Herds: 0 Prog Analysed: 0



© 2024 Angus Australia

**Important Notice**

The information contained in this animal listing has been compiled from databases owned by Angus Australia and has been designed, created and published by Angus Australia. The information is owned by Angus Australia and has been published for information purposes only. No section or individual item may be reproduced or used by any person or other legal entity for any commercial purpose whatsoever, without the prior express consent of Angus Australia.

# ALUMY CREEK REVERED T161 SVSV

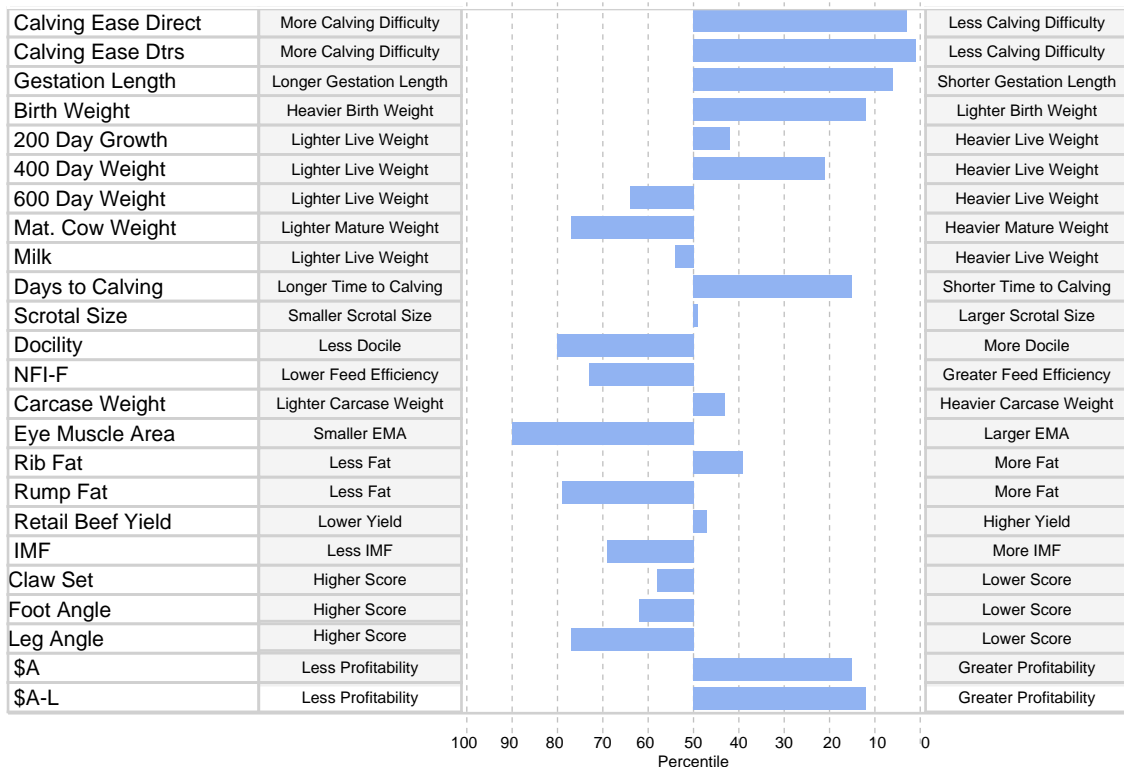


**Animal ID** NKE22T161  
**NLIS Visual No/RFID** NK512030XBTT0161 / -  
**Date of Birth** 09/08/2022  
**Inventory Season** n/a  
**Sex** Male  
**Register** Herd Book Register  
**Mating Type** AI  
**Colour** Black  
**Birth Number** Single  
**Status** Active  
**DNA Profile Stored** SNP  
**Parentage Verification** Sire verified  
**Genetic Conditions** AMFU,CAFU,DDFU,NHFU

USA17280032 BASIN RAINMAKER 2704#  
 USA17913751 BASIN RAINMAKER 4404<sup>PV</sup>  
 USA16935098 BASIN JOY 1036#  
**Sire: USA19548516 LT REVERED<sup>SV</sup>**  
 USA18200213 S FOUNDATION 514<sup>PV</sup>  
 USA18953479 LT ASHLEY 7078#  
 USA16178983 LT ASHLEY 8263#  
 USA16430862 K C F BENNETT SOUTHSIDE<sup>PV</sup>  
 USA17849954 K C F BENNETT THEROCK A473<sup>PV</sup>  
 USA16430913 K C F MISS PROTEGE W148#  
**Dam: NKEP027 ALUMY CREEK TANDIA P027#**  
 USA15148659 CONNEALY THUNDER#  
 NKEG32 ALUMY CREEK TANDIA G32#  
 NKEE61 ALUMY CREEK TANDIA E61#

August 2024 TransTasman Angus Cattle Evaluation												
TACE <small>TransTasman Angus Cattle Evaluation</small>	Calving Ease				Growth					Fertility		Temp
	Calving Ease Dir	Calving Ease Dtrs	Gest. Length	Birth Wt	200 Day Growth	400 Day Weight	600 Day Weight	Mat. Cow Weight	Milk	Days to Calving	Scrotal Size	Docility
<b>EBV</b>	<b>+9.0</b>	<b>+10.2</b>	<b>-8.4</b>	<b>+1.9</b>	<b>+53</b>	<b>+103</b>	<b>+113</b>	<b>+84</b>	<b>+16</b>	<b>-6.4</b>	<b>+2.1</b>	<b>+13</b>
Acc	63%	51%	84%	82%	82%	80%	81%	77%	73%	38%	78%	73%
Perc	3	1	6	12	42	21	64	77	54	15	50	80
	Carcase						Feed Efficiency		Structural		Selection Index	
	Carcase Weight	EMA	Rib Fat	Rump Fat	RBV	IMF	NFI-F	Claw Set	Foot Angle	Leg Angle	\$A	\$A-L
<b>EBV</b>	<b>+70</b>	<b>+2.2</b>	<b>+0.4</b>	<b>-2.1</b>	<b>+0.5</b>	<b>+1.5</b>	<b>+0.43</b>	<b>+0.88</b>	<b>+1.02</b>	<b>+1.12</b>	<b>\$238</b>	<b>\$403</b>
Acc	69%	68%	68%	69%	59%	73%	59%	68%	68%	54%	-	-
Perc	43	90	39	79	47	69	73	58	62	77	15	12

Traits Observed: GL,BWT,200WT,400WT,600WT,SC,Genomics  
 Statistics: Number of Herds: 0 Prog Analysed: 0



© 2024 Angus Australia

**Important Notice**

The information contained in this animal listing has been compiled from databases owned by Angus Australia and has been designed, created and published by Angus Australia. The information is owned by Angus Australia and has been published for information purposes only. No section or individual item may be reproduced or used by any person or other legal entity for any commercial purpose whatsoever, without the prior express consent of Angus Australia.

# ALUMY CREEK 38 SPECIAL T170 PVPV



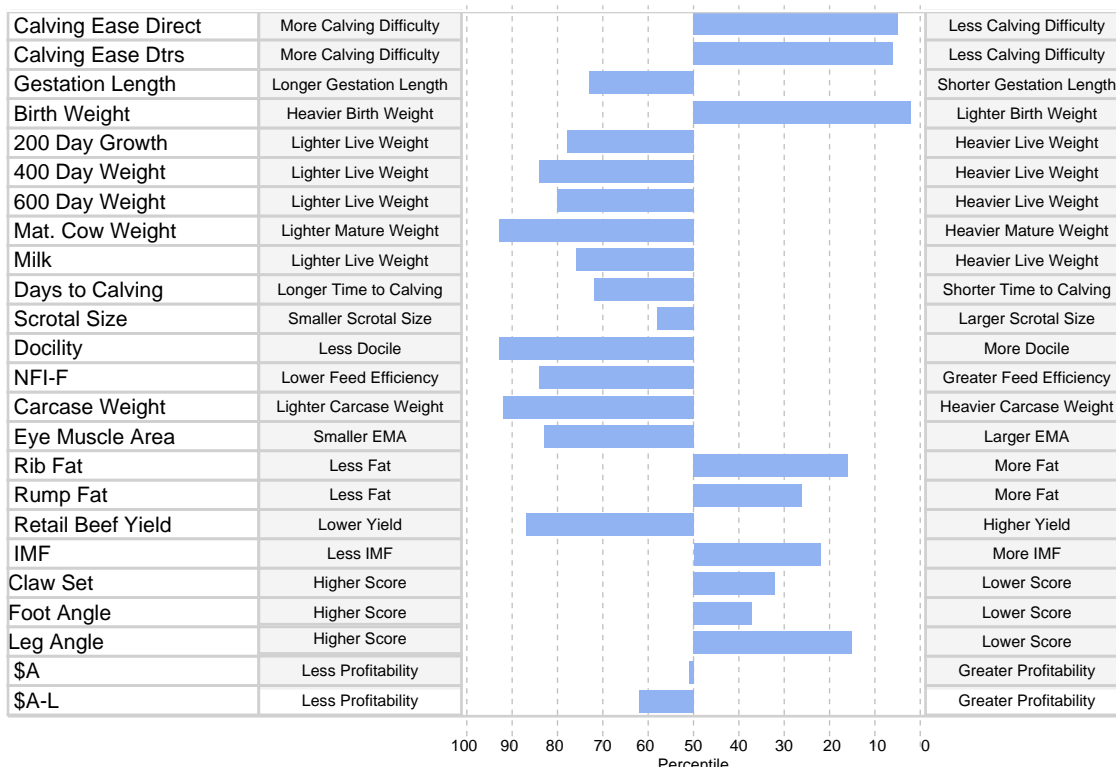
**Animal ID** NKE22T170  
**NLIS Visual No/Rfid** NK512030XBTT0170 / -  
**Date of Birth** 11/08/2022  
**Inventory Season** n/a  
**Sex** Male  
**Register** Herd Book Register  
**Mating Type** AI  
**Colour** Black  
**Birth Number** Single  
**Status** Active  
**DNA Profile Stored** SNP  
**Parentage Verification** Parent verified  
**Genetic Conditions** AMFU,CAFU,DDFU,NHFU

USA16198796 EF COMPLEMENT 8088<sup>PV</sup>  
 USA17082311 EF COMMANDO 1366<sup>PV</sup>  
 USA16543240 RIVERBEND YOUNG LUCY W1470<sup>#</sup>  
**Sire: USA18229487 BALDRIDGE 38 SPECIAL<sup>PV</sup>**  
 USA16244342 STYLES UPGRADE J59<sup>#</sup>  
 USA17149410 BALDRIDGE ISABEL Y69<sup>#</sup>  
 USA16746720 BALDRIDGE ISABEL T935<sup>#</sup>  
 USA16295688 G A R PROPHET<sup>SV</sup>  
 USA18333424 G A R PROACTIVE<sup>SV</sup>  
 USA17056864 G A R DAYBREAK 1521<sup>#</sup>  
**Dam: NKER092 ALUMY CREEK JANGLE R092<sup>SV</sup>**  
 USA18194405 MUSGRAVE APACHE<sup>SV</sup>  
 NKEP012 ALUMY CREEK JANGLE P012<sup>#</sup>  
 NKEM014 ALUMY CREEK JANGLE M014<sup>#</sup>

August 2024 TransTasman Angus Cattle Evaluation												
TACE	Calving Ease				Growth					Fertility		Temp
	Calving Ease Dir	Calving Ease Dtrs	Gest. Length	Birth Wt	200 Day Growth	400 Day Weight	600 Day Weight	Mat. Cow Weight	Milk	Days to Calving	Scrotal Size	Docility
<b>EBV</b>	<b>+8.5</b>	<b>+8.1</b>	<b>-2.9</b>	<b>-0.3</b>	<b>+44</b>	<b>+79</b>	<b>+104</b>	<b>+66</b>	<b>+14</b>	<b>-3.7</b>	<b>+1.9</b>	<b>+7</b>
Acc	69%	59%	83%	82%	83%	81%	82%	79%	76%	45%	80%	78%
Perc	5	6	73	2	78	84	80	93	76	72	58	93
	Carcase						Feed Efficiency		Structural		Selection Index	
	Carcase Weight	EMA	Rib Fat	Rump Fat	RBV	IMF	NFI-F	Claw Set	Foot Angle	Leg Angle	\$A	\$A-L
<b>EBV</b>	<b>+49</b>	<b>+3.3</b>	<b>+1.7</b>	<b>+1.1</b>	<b>-0.3</b>	<b>+3.4</b>	<b>+0.57</b>	<b>+0.76</b>	<b>+0.92</b>	<b>+0.90</b>	<b>\$202</b>	<b>\$334</b>
Acc	71%	71%	70%	71%	63%	75%	62%	71%	71%	66%	-	-
Perc	92	83	16	26	87	22	84	32	37	15	51	62

Traits Observed: GL,BWT,200WT,400WT,600WT,SC,Genomics

Statistics: Number of Herds: 0 Prog Analysed: 0



© 2024 Angus Australia

**Important Notice**

The information contained in this animal listing has been compiled from databases owned by Angus Australia and has been designed, created and published by Angus Australia. The information is owned by Angus Australia and has been published for information purposes only. No section or individual item may be reproduced or used by any person or other legal entity for any commercial purpose whatsoever, without the prior express consent of Angus Australia.

# ALUMY CREEK REVERED T171 SVSV

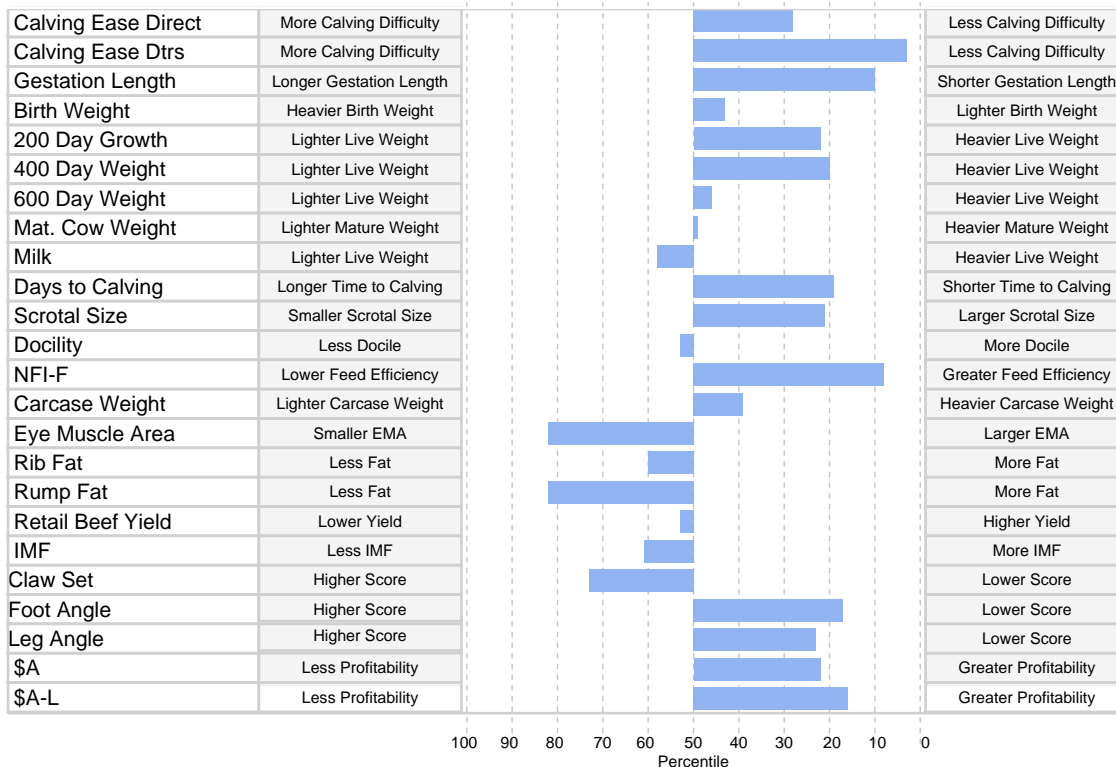


**Animal ID** NKE22T171  
**NLIS Visual No/RFID** NK512030XBTT0171 / -  
**Date of Birth** 11/08/2022  
**Inventory Season** n/a  
**Sex** Male  
**Register** Herd Book Register  
**Mating Type** AI  
**Colour** Black  
**Birth Number** Single  
**Status** Active  
**DNA Profile Stored** SNP  
**Parentage Verification** Sire verified  
**Genetic Conditions** AMFU,CAFU,DDFU,NHFU

USA17280032 BASIN RAINMAKER 2704#  
 USA17913751 BASIN RAINMAKER 4404<sup>PV</sup>  
 USA16935098 BASIN JOY 1036#  
**Sire: USA19548516 LT REVERED<sup>SV</sup>**  
 USA18200213 S FOUNDATION 514<sup>PV</sup>  
 USA18953479 LT ASHLEY 7078#  
 USA16178983 LT ASHLEY 8263#  
 USA16430862 K C F BENNETT SOUTHSIDE<sup>PV</sup>  
 USA17849954 K C F BENNETT THEROCK A473<sup>PV</sup>  
 USA16430913 K C F MISS PROTEGE W148#  
**Dam: NKEQ086 ALUMY CREEK DORIS Q086#**  
 NORE11 RENNYLEA EDMUND E11<sup>PV</sup>  
 NKELO22 ALUMY CREEK DORIS L022#  
 NKEJ18 ALUMY CREEK DORIS J18#

August 2024 TransTasman Angus Cattle Evaluation												
TACE <small>TransTasman Angus Cattle Evaluation</small>	Calving Ease				Growth					Fertility		Temp
	Calving Ease Dir	Calving Ease Dtrs	Gest. Length	Birth Wt	200 Day Growth	400 Day Weight	600 Day Weight	Mat. Cow Weight	Milk	Days to Calving	Scrotal Size	Docility
<b>EBV</b>	<b>+4.8</b>	<b>+8.9</b>	<b>-7.6</b>	<b>+3.7</b>	<b>+57</b>	<b>+103</b>	<b>+121</b>	<b>+102</b>	<b>+16</b>	<b>-6.1</b>	<b>+3.0</b>	<b>+20</b>
Acc	62%	50%	83%	82%	82%	80%	81%	77%	72%	37%	77%	72%
Perc	28	3	10	43	22	20	46	50	58	19	21	53
	Carcase					Feed Efficiency		Structural		Selection Index		
	Carcase Weight	EMA	Rib Fat	Rump Fat	RBV	IMF	NFI-F	Claw Set	Foot Angle	Leg Angle	\$A	\$A-L
<b>EBV</b>	<b>+71</b>	<b>+3.4</b>	<b>-0.5</b>	<b>-2.4</b>	<b>+0.4</b>	<b>+1.8</b>	<b>-0.29</b>	<b>+0.96</b>	<b>+0.82</b>	<b>+0.94</b>	<b>\$228</b>	<b>\$396</b>
Acc	69%	68%	68%	68%	59%	72%	58%	67%	67%	54%	-	-
Perc	39	82	60	82	53	61	8	73	17	23	22	16

Traits Observed: GL,BWT,400WT,600WT,SC,Genomics  
 Statistics: Number of Herds: 0 Prog Analysed: 0



© 2024 Angus Australia

**Important Notice**

The information contained in this animal listing has been compiled from databases owned by Angus Australia and has been designed, created and published by Angus Australia. The information is owned by Angus Australia and has been published for information purposes only. No section or individual item may be reproduced or used by any person or other legal entity for any commercial purpose whatsoever, without the prior express consent of Angus Australia.

# ALUMY CREEK ENTICE T174 SVSV

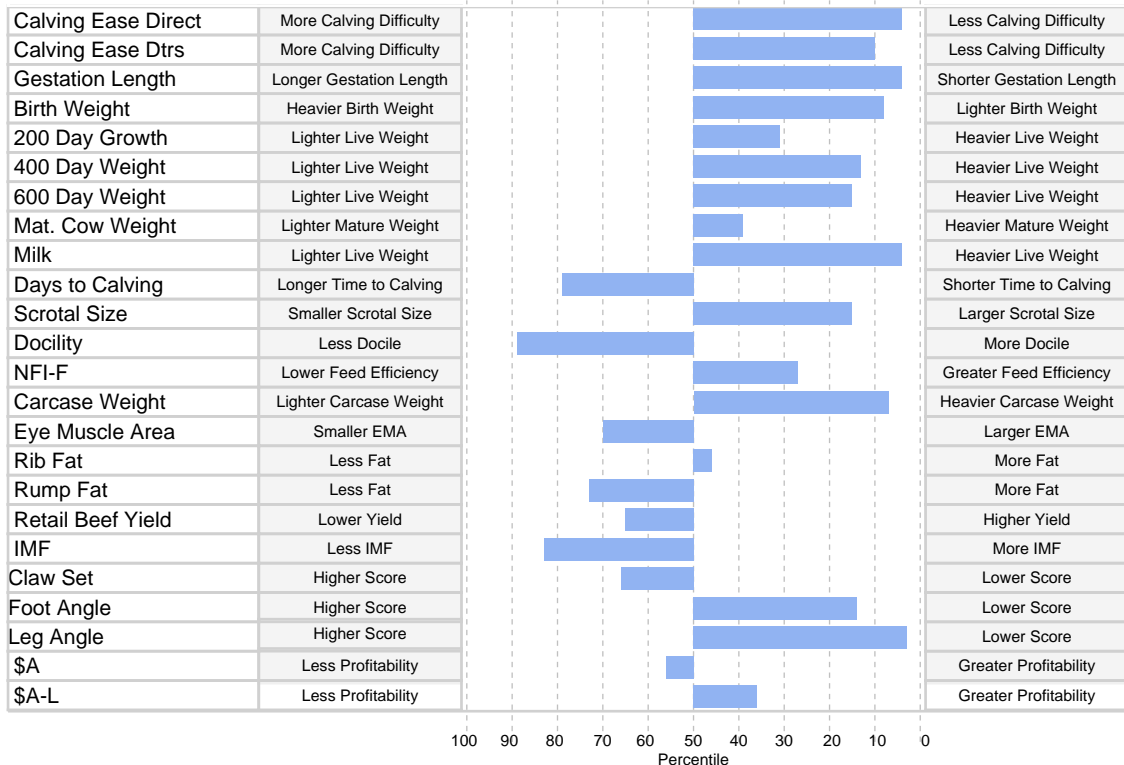


**Animal ID** NKE22T174  
**NLIS Visual No/RFID** - / -  
**Date of Birth** 11/08/2022  
**Inventory Season** n/a  
**Sex** Male  
**Register** Herd Book Register  
**Mating Type** AI  
**Colour** Black  
**Birth Number** Twin  
**Status** Active  
**DNA Profile Stored** SNP  
**Parentage Verification** Sire verified  
**Genetic Conditions** AMFU,CAFU,DDFU,NHFU

USA17501893 SYDGEN EXCEED 3223<sup>PV</sup>  
 USA18170041 SYDGEN ENHANCE<sup>SV</sup>  
 USA17405676 SYDGEN RITA 2618<sup>#</sup>  
**Sire: USA18952921 MOGCK ENTICE<sup>SV</sup>**  
 USA17671300 MOGCK SURE SHOT 253<sup>#</sup>  
 USA18334720 MOGCK ERICA 2255<sup>#</sup>  
 USA17359834 MOGCK ERICA 2162<sup>#</sup>  
 USA13880818 MYTTY IN FOCUS<sup>#</sup>  
 NKEE04 ALUMY CREEK IN FOCUS E04<sup>SV</sup>  
 NKEC35 ALUMY CREEK APPLAUSE C35<sup>#</sup>  
**Dam: NKEK95 ALUMY CREEK JANGLE K95<sup>#</sup>**  
 USA14885809 K C F BENNETT PERFORMER<sup>#</sup>  
 NKEF70 ALUMY CREEK F70<sup>#</sup>  
 NKEA17 ALUMY CREEK JANGLE A17<sup>#</sup>

August 2024 TransTasman Angus Cattle Evaluation												
TACE <small>TransTasman Angus Cattle Evaluation</small>	Calving Ease				Growth					Fertility		Temp
	Calving Ease Dir	Calving Ease Dtrs	Gest. Length	Birth Wt	200 Day Growth	400 Day Weight	600 Day Weight	Mat. Cow Weight	Milk	Days to Calving	Scrotal Size	Docility
<b>EBV</b>	<b>+8.8</b>	<b>+7.4</b>	<b>-8.8</b>	<b>+1.4</b>	<b>+55</b>	<b>+107</b>	<b>+138</b>	<b>+109</b>	<b>+27</b>	<b>-3.3</b>	<b>+3.3</b>	<b>+10</b>
Acc	66%	56%	83%	82%	83%	81%	82%	79%	74%	41%	80%	76%
Perc	4	10	4	8	31	13	15	39	4	79	15	89
	Carcase					Feed Efficiency		Structural		Selection Index		
	Carcase Weight	EMA	Rib Fat	Rump Fat	RBV	IMF	NFI-F	Claw Set	Foot Angle	Leg Angle	\$A	\$A-L
<b>EBV</b>	<b>+88</b>	<b>+4.7</b>	<b>+0.1</b>	<b>-1.7</b>	<b>+0.2</b>	<b>+0.9</b>	<b>+0.00</b>	<b>+0.92</b>	<b>+0.80</b>	<b>+0.78</b>	<b>\$198</b>	<b>\$366</b>
Acc	70%	70%	69%	70%	61%	74%	59%	69%	69%	60%	-	-
Perc	7	70	46	73	65	83	27	66	14	3	56	36

Traits Observed: 200WT,400WT,600WT,SC,Genomics  
 Statistics: Number of Herds: 0 Prog Analysed: 0



**Important Notice**

© 2024 Angus Australia  
 The information contained in this animal listing has been compiled from databases owned by Angus Australia and has been designed, created and published by Angus Australia. The information is owned by Angus Australia and has been published for information purposes only. No section or individual item may be reproduced or used by any person or other legal entity for any commercial purpose whatsoever, without the prior express consent of Angus Australia.

# ALUMY CREEK ENTICE T184 SVSV

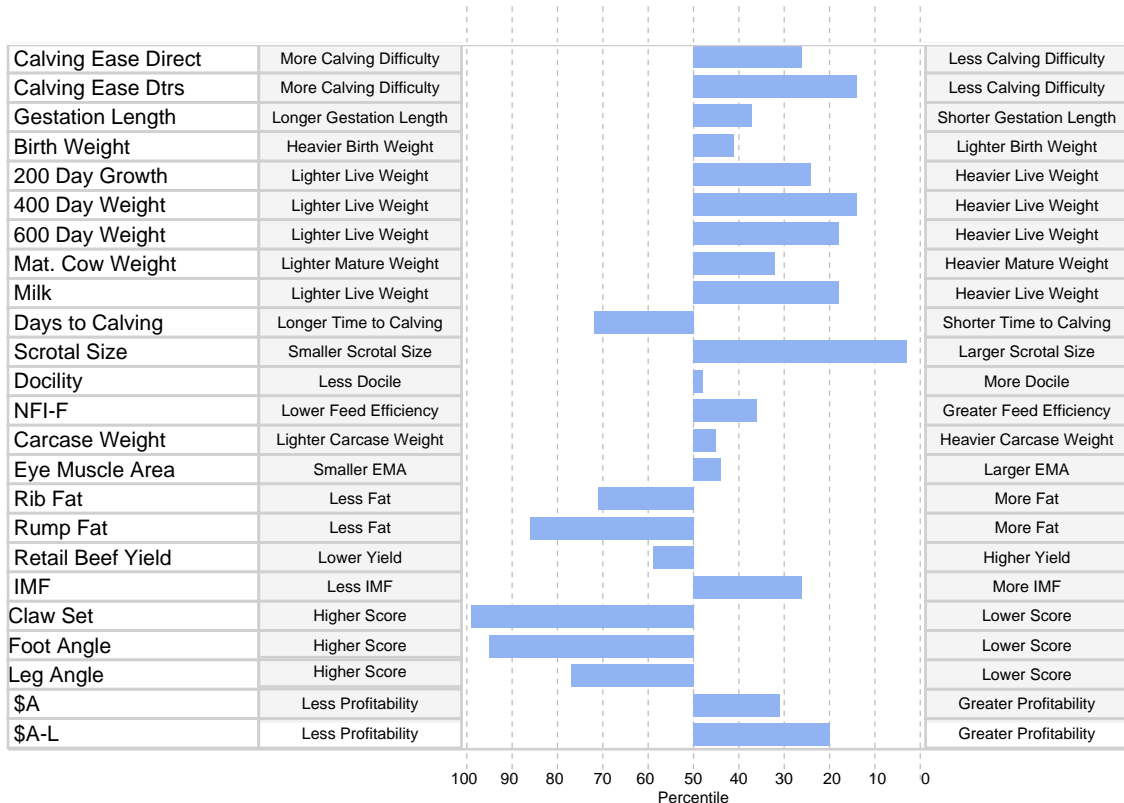


**Animal ID** NKE22T184  
**NLIS Visual No/RFID** NK512030XBTT0184 / -  
**Date of Birth** 13/08/2022  
**Inventory Season** n/a  
**Sex** Male  
**Register** Herd Book Register  
**Mating Type** AI  
**Colour** Black  
**Birth Number** Single  
**Status** Active  
**DNA Profile Stored** SNP  
**Parentage Verification** Sire verified  
**Genetic Conditions** AMFU,CAFU,DDFU,NHFU

USA17501893 SYDGEN EXCEED 3223<sup>PV</sup>  
 USA18170041 SYDGEN ENHANCE<sup>SV</sup>  
 USA17405676 SYDGEN RITA 2618<sup>#</sup>  
**Sire: USA18952921 MOGCK ENTICE<sup>SV</sup>**  
 USA17671300 MOGCK SURE SHOT 253<sup>#</sup>  
 USA18334720 MOGCK ERICA 2255<sup>#</sup>  
 USA17359834 MOGCK ERICA 2162<sup>#</sup>  
 USA16752262 CONNEALY CAPITALIST 028<sup>#</sup>  
 USA17666102 LD CAPITALIST 316<sup>PV</sup>  
 USA14407230 LD DIXIE ERICA 2053<sup>#</sup>  
**Dam: NKEP054 ALUMY CREEK DORIS P054<sup>#</sup>**  
 USA16541214 EXAR UPSHOT 0562B<sup>#</sup>  
 NKEK29 ALUMY CREEK DORIS K29<sup>#</sup>  
 NKEG37 ALUMY CREEK DORIS G37<sup>#</sup>

August 2024 TransTasman Angus Cattle Evaluation												
TACE <small>TransTasman Angus Cattle Evaluation</small>	Calving Ease				Growth					Fertility		Temp
	Calving Ease Dir	Calving Ease Dtrs	Gest. Length	Birth Wt	200 Day Growth	400 Day Weight	600 Day Weight	Mat. Cow Weight	Milk	Days to Calving	Scrotal Size	Docility
<b>EBV</b>	<b>+5.0</b>	<b>+6.7</b>	<b>-5.2</b>	<b>+3.6</b>	<b>+57</b>	<b>+106</b>	<b>+135</b>	<b>+113</b>	<b>+21</b>	<b>-3.7</b>	<b>+4.6</b>	<b>+21</b>
Acc	67%	57%	84%	82%	83%	81%	82%	78%	74%	43%	79%	76%
Perc	26	14	37	41	24	14	18	32	18	72	3	48
	Carcase						Feed Efficiency		Structural		Selection Index	
	Carcase Weight	EMA	Rib Fat	Rump Fat	RBV	IMF	NFI-F	Claw Set	Foot Angle	Leg Angle	\$A	\$A-L
<b>EBV</b>	<b>+69</b>	<b>+6.8</b>	<b>-1.0</b>	<b>-2.7</b>	<b>+0.3</b>	<b>+3.2</b>	<b>+0.09</b>	<b>+1.26</b>	<b>+1.24</b>	<b>+1.12</b>	<b>\$220</b>	<b>\$388</b>
Acc	70%	69%	69%	69%	62%	73%	60%	71%	71%	63%	-	-
Perc	45	44	71	86	59	26	36	99	95	77	31	20

Traits Observed: GL,BWT,200WT,400WT,600WT,SC,Genomics  
 Statistics: Number of Herds: 0 Prog Analysed: 0



© 2024 Angus Australia

**Important Notice**

The information contained in this animal listing has been compiled from databases owned by Angus Australia and has been designed, created and published by Angus Australia. The information is owned by Angus Australia and has been published for information purposes only. No section or individual item may be reproduced or used by any person or other legal entity for any commercial purpose whatsoever, without the prior express consent of Angus Australia.

# ALUMY CREEK ENTICE T191 SVSV

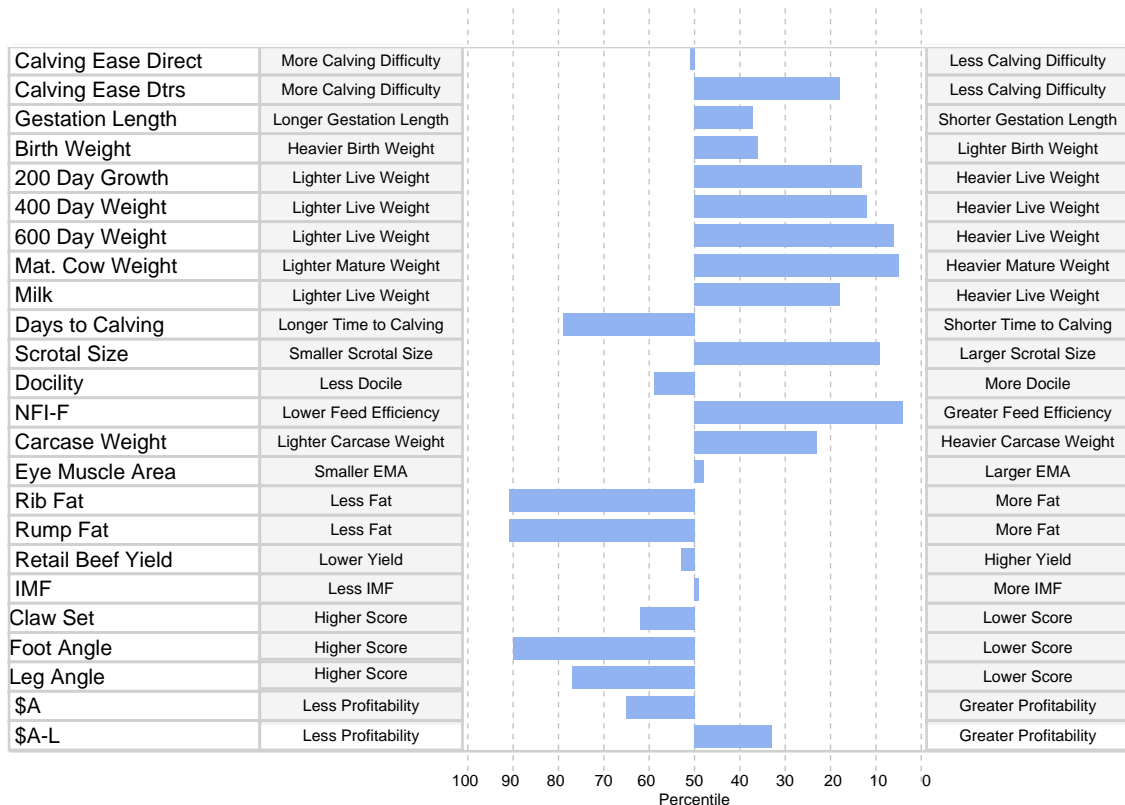


**Animal ID** NKE22T191  
**NLIS Visual No/RFID** NK512030XBTT0191 / -  
**Date of Birth** 13/08/2022  
**Inventory Season** n/a  
**Sex** Male  
**Register** Herd Book Register  
**Mating Type** AI  
**Colour** Black  
**Birth Number** Single  
**Status** Active  
**DNA Profile Stored** SNP  
**Parentage Verification** Sire verified  
**Genetic Conditions** AMFU,CA5%,DDFU,NHFU

USA17501893 SYDGEN EXCEED 3223<sup>PV</sup>  
 USA18170041 SYDGEN ENHANCE<sup>SV</sup>  
 USA17405676 SYDGEN RITA 2618<sup>#</sup>  
**Sire: USA18952921 MOGCK ENTICE<sup>SV</sup>**  
 USA17671300 MOGCK SURE SHOT 253<sup>#</sup>  
 USA18334720 MOGCK ERICA 2255<sup>#</sup>  
 USA17359834 MOGCK ERICA 2162<sup>#</sup>  
 USA15028961 BASIN EXPEDITION R156<sup>#</sup>  
 USA16047404 BASIN EXCITEMENT<sup>PV</sup>  
 USA15405297 BASIN LADY S532 AK<sup>#</sup>  
**Dam: NKEK59 ALUMY CREEK TRILOGY K59<sup>#</sup>**  
 USA15840414 TC ABERDEEN 759<sup>SV</sup>  
 NKEH54 ALUMY CREEK TRILOGY H54<sup>#</sup>  
 NKEE50 ALUMY CREEK TRILOGY E50<sup>#</sup>

August 2024 TransTasman Angus Cattle Evaluation												
TACE	Calving Ease				Growth					Fertility		Temp
	Calving Ease Dir	Calving Ease Dtrs	Gest. Length	Birth Wt	200 Day Growth	400 Day Weight	600 Day Weight	Mat. Cow Weight	Milk	Days to Calving	Scrotal Size	Docility
<b>EBV</b>	<b>+2.3</b>	<b>+6.2</b>	<b>-5.2</b>	<b>+3.4</b>	<b>+60</b>	<b>+107</b>	<b>+149</b>	<b>+147</b>	<b>+21</b>	<b>-3.3</b>	<b>+3.7</b>	<b>+18</b>
Acc	66%	55%	84%	82%	83%	81%	82%	78%	74%	41%	79%	76%
Perc	51	18	37	36	13	12	6	5	18	79	9	59
	Carcase					Feed Efficiency			Structural		Selection Index	
	Carcase Weight	EMA	Rib Fat	Rump Fat	RBV	IMF	NFI-F	Claw Set	Foot Angle	Leg Angle	\$A	\$A-L
<b>EBV</b>	<b>+77</b>	<b>+6.5</b>	<b>-2.3</b>	<b>-3.4</b>	<b>+0.4</b>	<b>+2.2</b>	<b>-0.46</b>	<b>+0.90</b>	<b>+1.18</b>	<b>+1.12</b>	<b>\$189</b>	<b>\$370</b>
Acc	70%	69%	69%	69%	62%	73%	59%	70%	70%	60%	-	-
Perc	23	48	91	91	53	49	4	62	90	77	65	33

Traits Observed: GL,BWT,200WT,600WT,SC,Genomics  
 Statistics: Number of Herds: 0 Prog Analysed: 0



© 2024 Angus Australia

**Important Notice**

The information contained in this animal listing has been compiled from databases owned by Angus Australia and has been designed, created and published by Angus Australia. The information is owned by Angus Australia and has been published for information purposes only. No section or individual item may be reproduced or used by any person or other legal entity for any commercial purpose whatsoever, without the prior express consent of Angus Australia.



# ALUMY CREEK BONUS T197 PVPV

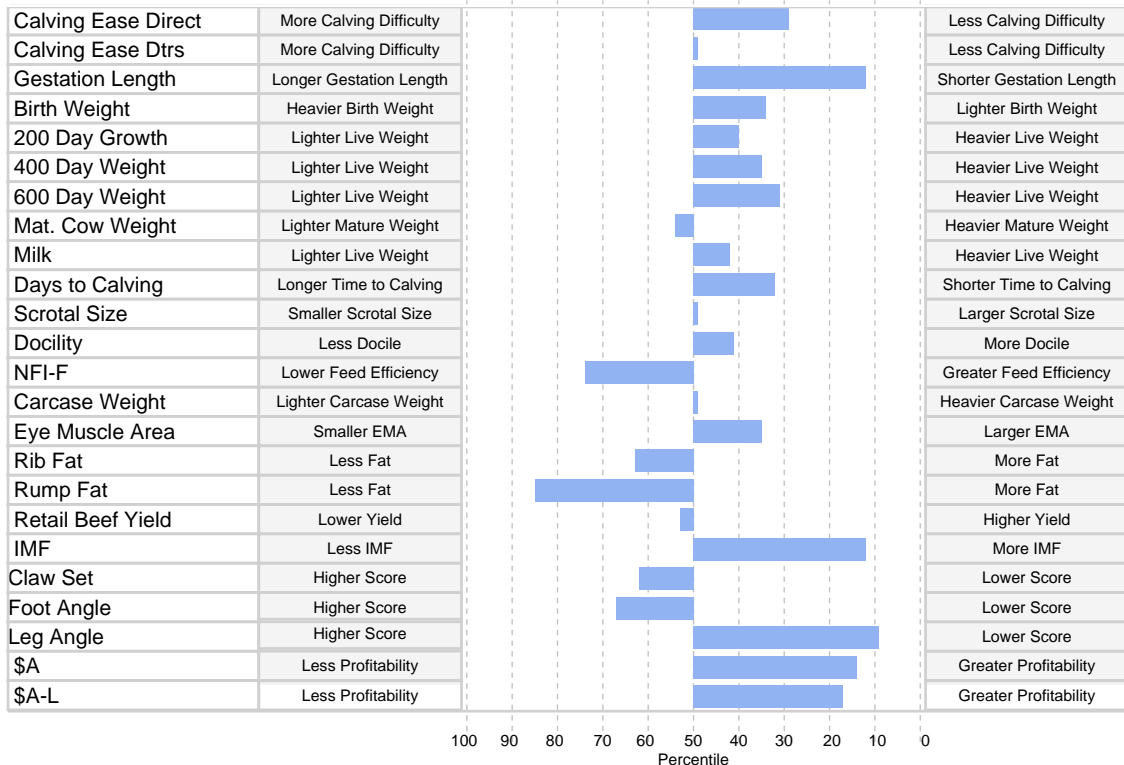


**Animal ID** NKE22T197  
**NLIS Visual No/RFID** NK512030XBTT0197 / -  
**Date of Birth** 15/08/2022  
**Inventory Season** n/a  
**Sex** Male  
**Register** Herd Book Register  
**Mating Type** AI  
**Colour** Black  
**Birth Number** Single  
**Status** Active  
**DNA Profile Stored** SNP  
**Parentage Verification** Parent verified  
**Genetic Conditions** AMFU,CAFU,DDFU,NHFU

USA16711095 SYDGEN GOOGOL#  
 USA17501893 SYDGEN EXCEED 3223<sup>PV</sup>  
 USA16904400 SYDGEN FOREVER LADY 1255#  
**Sire: USA19169335 SYDGEN BONUS 8084<sup>PV</sup>**  
 USA16295688 G A R PROPHET<sup>SV</sup>  
 USA18104837 SYDGEN BLACKCAP 5371#  
 USA17270735 H P C A 5050 212#  
 USA16430862 K C F BENNETT SOUTHSIDE<sup>PV</sup>  
 USA17849954 K C F BENNETT THEROCK A473<sup>PV</sup>  
 USA16430913 K C F MISS PROTEGE W148#  
**Dam: NKER091 ALUMY CREEK TRILOGY R091<sup>SV</sup>**  
 USA18229488 BALDRIDGE COMPASS C041<sup>SV</sup>  
 NKEN057 ALUMY CREEK TRILOGY N057#  
 NKEF60 ALUMY CREEK TRILOGY F60#

August 2024 TransTasman Angus Cattle Evaluation												
TACE <small>TransTasman Angus Cattle Evaluation</small>	Calving Ease				Growth					Fertility		Temp
	Calving Ease Dir	Calving Ease Dtrs	Gest. Length	Birth Wt	200 Day Growth	400 Day Weight	600 Day Weight	Mat. Cow Weight	Milk	Days to Calving	Scrotal Size	Docility
<b>EBV</b>	<b>+4.7</b>	<b>+3.1</b>	<b>-7.4</b>	<b>+3.3</b>	<b>+53</b>	<b>+97</b>	<b>+128</b>	<b>+99</b>	<b>+18</b>	<b>-5.4</b>	<b>+2.1</b>	<b>+22</b>
Acc	66%	55%	83%	82%	83%	81%	82%	78%	75%	40%	79%	77%
Perc	29	50	12	34	40	35	31	54	42	32	50	41
	Carcase						Feed Efficiency		Structural		Selection Index	
	Carcase Weight	EMA	Rib Fat	Rump Fat	RBV	IMF	NFI-F	Claw Set	Foot Angle	Leg Angle	\$A	\$A-L
<b>EBV</b>	<b>+68</b>	<b>+7.6</b>	<b>-0.6</b>	<b>-2.6</b>	<b>+0.4</b>	<b>+4.1</b>	<b>+0.44</b>	<b>+0.90</b>	<b>+1.04</b>	<b>+0.86</b>	<b>\$239</b>	<b>\$394</b>
Acc	70%	70%	70%	70%	62%	74%	60%	70%	70%	65%	-	-
Perc	50	35	63	85	53	12	74	62	67	9	14	17

Traits Observed: GL,BWT,200WT,400WT,600WT,SC,Genomics  
 Statistics: Number of Herds: 0 Prog Analysed: 0



© 2024 Angus Australia

**Important Notice**

The information contained in this animal listing has been compiled from databases owned by Angus Australia and has been designed, created and published by Angus Australia. The information is owned by Angus Australia and has been published for information purposes only. No section or individual item may be reproduced or used by any person or other legal entity for any commercial purpose whatsoever, without the prior express consent of Angus Australia.